

## Product datasheet for **TA328142**

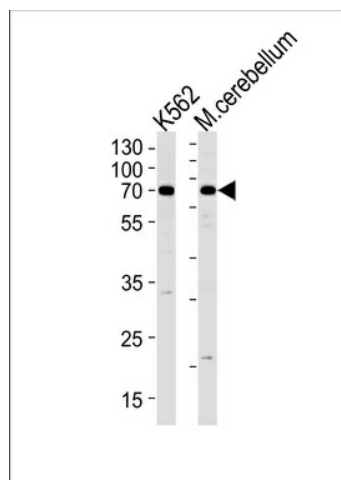
### EPM2AIP1 Rabbit Polyclonal Antibody

#### Product data:

|                       |  |
|-----------------------|--|
| Product Type:         | Primary Antibodies   |
| Applications:         | WB   |
| Recommended Dilution: | WB: 1:1000   |
| Reactivity:           | Human, Mouse   |
| Host:                 | Rabbit   |
| Isotype:              | Ig   |
| Clonality:            | Polyclonal   |
| Immunogen:            | This EPM2AIP1 antibody is generated from rabbits immunized with a KLH conjugated synthetic peptide between 39-62 amino acids from the N-terminal region of human EPM2AIP1. |
| Formulation:          | PBS with 0.09% (W/V) sodium azide  |
| Concentration:        | lot specific   |
| Purification:         | This antibody is purified through a protein A column, followed by peptide affinity purification.   |
| Conjugation:          | Unconjugated   |
| Storage:              | Store at -20°C as received.  |
| Stability:            | Stable for 12 months from date of receipt.   |
| Gene Name:            | EPM2A (laforin) interacting protein 1  |
| Database Link:        | <a href="#">NP_055620</a><br><a href="#">Entrez Gene 77781 Mouse</a> <a href="#">Entrez Gene 9852 Human</a><br><a href="#">Q7L775</a>                                      |
| Background:           | The function of this protein is unknown.   |
| Synonyms:             | FLJ11207; KIAA0766   |



[View online »](#)

**Product images:**

EPM2AIP1 Antibody (N-term) (Cat. #TA328142) western blot analysis in K562 cell line and mouse cerebellum tissue lysates (35ug/lane). This demonstrates the EPM2AIP1 antibody detected the EPM2AIP1 protein (arrow).