

Product datasheet for **TA328140**

ATAD3A Rabbit Polyclonal Antibody

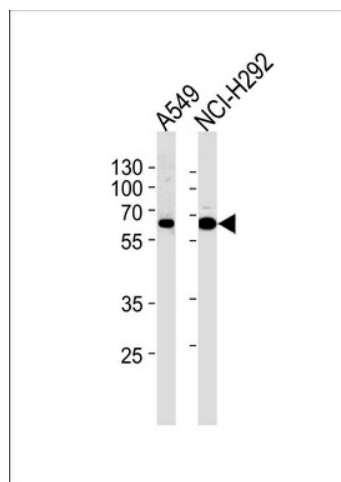
Product data:

Product Type:	Primary Antibodies
Applications:	WB
Recommended Dilution:	WB: 1:1000
Reactivity:	Human
Host:	Rabbit
Isotype:	Ig
Clonality:	Polyclonal
Immunogen:	This ATAD3A antibody is generated from rabbits immunized with a KLH conjugated synthetic peptide between 24-48 amino acids from the N-terminal region of human ATAD3A.
Formulation:	PBS with 0.09% (W/V) sodium azide
Concentration:	lot specific
Purification:	This antibody is purified through a protein A column, followed by peptide affinity purification.
Conjugation:	Unconjugated
Storage:	Store at -20°C as received.
Stability:	Stable for 12 months from date of receipt.
Gene Name:	ATPase family, AAA domain containing 3A
Database Link:	NP_060658 Entrez Gene 55210 Human Q9NVI7
Background:	Essential for mitochondrial network organization, mitochondrial metabolism and cell growth at organism and cellular level. May play an important in mitochondrial protein synthesis. May also participate in mitochondrial DNA replication. May bind to mitochondrial DNA D-loops and contribute to nucleoid stability.
Synonyms:	FLJ10709; FLJ35514



[View online »](#)

Product images:



ATAD3A Antibody (N-term) (Cat. #TA328140) western blot analysis in A549 and NCI-H292 cell line lysates (35ug/lane). This demonstrates the ATAD3A antibody detected the ATAD3A protein (arrow).