

Product datasheet for **TA328139S**

Macro H2A.2 (H2AFY2) Rabbit Polyclonal Antibody

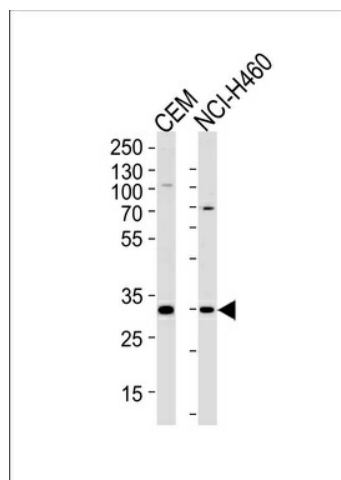
Product data:

Product Type:	Primary Antibodies
Applications:	WB
Recommended Dilution:	WB: 1:1000
Reactivity:	Human
Host:	Rabbit
Isotype:	Ig
Clonality:	Polyclonal
Immunogen:	This H2AFY2 antibody is generated from rabbits immunized with a KLH conjugated synthetic peptide between 148-169 amino acids from the Central region of human H2AFY2.
Formulation:	PBS with 0.09% (W/V) sodium azide
Concentration:	lot specific
Purification:	This antibody is purified through a protein A column, followed by peptide affinity purification.
Conjugation:	Unconjugated
Storage:	Store at -20°C as received.
Stability:	Stable for 12 months from date of receipt.
Gene Name:	H2A histone family member Y2
Database Link:	NP_061119 Entrez Gene 55506 Human Q9P0M6
Background:	Variant histone H2A which replaces conventional H2A in a subset of nucleosomes where it represses transcription. Nucleosomes wrap and compact DNA into chromatin, limiting DNA accessibility to the cellular machineries which require DNA as a template. Histones thereby play a central role in transcription regulation, DNA repair, DNA replication and chromosomal stability. DNA accessibility is regulated via a complex set of post-translational modifications of histones, also called histone code, and nucleosome remodeling. May be involved in stable X chromosome inactivation.
Synonyms:	macroH2A2
Protein Pathways:	Systemic lupus erythematosus



[View online »](#)

Product images:



H2AFY2 Antibody (Center) (Cat. #[TA328139]) western blot analysis in CEM, NCI-H460 cell line lysates (35ug/lane). This demonstrates the H2AFY2 antibody detected the H2AFY2 protein (arrow).