

## Product datasheet for **TA328138**

### **POLR2C Rabbit Polyclonal Antibody**

#### **Product data:**

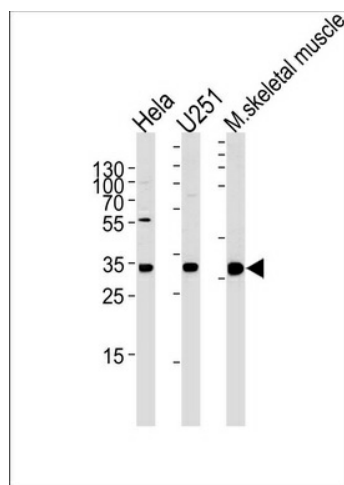
<b>Product Type:</b>	Primary Antibodies
<b>Applications:</b>	WB
<b>Recommended Dilution:</b>	WB: 1:1000
<b>Reactivity:</b>	Human, Mouse (Predicted: Bovine)
<b>Host:</b>	Rabbit
<b>Isotype:</b>	Ig
<b>Clonality:</b>	Polyclonal
<b>Immunogen:</b>	This POLR2C antibody is generated from rabbits immunized with a KLH conjugated synthetic peptide between 200-228 amino acids from the C-terminal region of human POLR2C.
<b>Formulation:</b>	PBS with 0.09% (W/V) sodium azide
<b>Concentration:</b>	lot specific
<b>Purification:</b>	This antibody is purified through a protein A column, followed by peptide affinity purification.
<b>Conjugation:</b>	Unconjugated
<b>Storage:</b>	Store at -20°C as received.
<b>Stability:</b>	Stable for 12 months from date of receipt.
<b>Gene Name:</b>	polymerase (RNA) II subunit C
<b>Database Link:</b>	<a href="#">NP_116558</a> <a href="#">Entrez Gene 20021 Mouse</a> <a href="#">Entrez Gene 5432 Human</a> <a href="#">P19387</a>
<b>Background:</b>	DNA-dependent RNA polymerase catalyzes the transcription of DNA into RNA using the four ribonucleoside triphosphates as substrates. Component of RNA polymerase II which synthesizes mRNA precursors and many functional non-coding RNAs. Pol II is the central component of the basal RNA polymerase II transcription machinery. It is composed of mobile elements that move relative to each other. RPB3 is part of the core element with the central large cleft and the clamp element that moves to open and close the cleft (By similarity).
<b>Synonyms:</b>	hRPB33; hsRPB3; RPB3; RPB31
<b>Protein Families:</b>	Druggable Genome, Transcription Factors



[View online »](#)

**Protein Pathways:** Huntington's disease, Metabolic pathways, Purine metabolism, Pyrimidine metabolism, RNA polymerase

**Product images:**



POLR2C Antibody (C-term) (Cat. #TA328138) western blot analysis in HeLa, U251 cell line and mouse skeletal muscle tissue lysates (35ug/lane). This demonstrates the POLR2C antibody detected the POLR2C protein (arrow).