

Product datasheet for **TA328136**

STX1B Rabbit Polyclonal Antibody

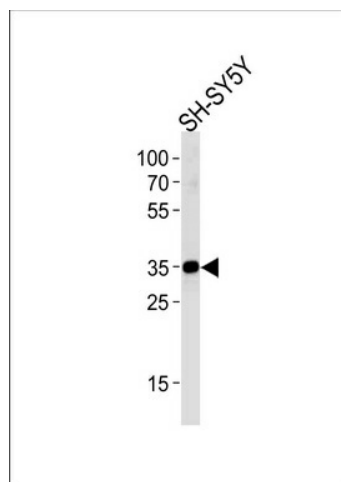
Product data:

Product Type:	Primary Antibodies
Applications:	WB
Recommended Dilution:	WB: 1:1000
Reactivity:	Human (Predicted: Mouse, Rat, Bovine)
Host:	Rabbit
Isotype:	Ig
Clonality:	Polyclonal
Immunogen:	This STX1B antibody is generated from rabbits immunized with a KLH conjugated synthetic peptide between 1-30 amino acids from the N-terminal region of human STX1B.
Formulation:	PBS with 0.09% (W/V) sodium azide
Concentration:	lot specific
Purification:	This antibody is purified through a protein A column, followed by peptide affinity purification.
Conjugation:	Unconjugated
Storage:	Store at -20°C as received.
Stability:	Stable for 12 months from date of receipt.
Gene Name:	syntaxin 1B
Database Link:	NP_443106 Entrez Gene 24923 Rat Entrez Gene 56216 Mouse Entrez Gene 112755 Human P61266
Background:	Potentially involved in docking of synaptic vesicles at presynaptic active zones. May mediate Ca(2+)-regulation of exocytosis acrosomal reaction in sperm (By similarity).
Synonyms:	GEFSP9; STX1B1; STX1B2
Protein Families:	Druggable Genome, Transmembrane
Protein Pathways:	SNARE interactions in vesicular transport



[View online »](#)

Product images:



STX1B Antibody (N-term) (Cat. #TA328136) western blot analysis in SH-SY5Y cell line lysates (35ug/lane). This demonstrates the STX1B antibody detected the STX1B protein (arrow).