

## Product datasheet for **TA328133**

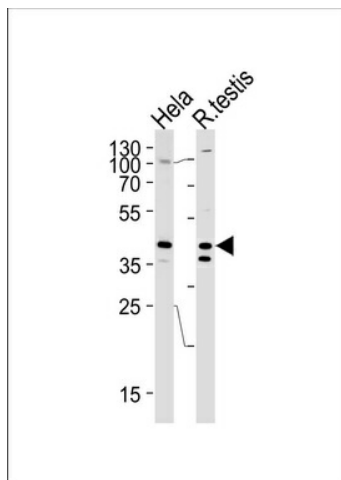
### **KHDRBS2 Rabbit Polyclonal Antibody**

#### **Product data:**

<b>Product Type:</b>	Primary Antibodies
<b>Applications:</b>	WB
<b>Recommended Dilution:</b>	WB: 1:1000
<b>Reactivity:</b>	Human, Rat
<b>Host:</b>	Rabbit
<b>Isotype:</b>	Ig
<b>Clonality:</b>	Polyclonal
<b>Immunogen:</b>	This KHDRBS2 antibody is generated from rabbits immunized with a KLH conjugated synthetic peptide between 298-321 amino acids from the C-terminal region of human KHDRBS2.
<b>Formulation:</b>	PBS with 0.09% (W/V) sodium azide
<b>Concentration:</b>	lot specific
<b>Purification:</b>	This antibody is purified through a protein A column, followed by peptide affinity purification.
<b>Conjugation:</b>	Unconjugated
<b>Storage:</b>	Store at -20°C as received.
<b>Stability:</b>	Stable for 12 months from date of receipt.
<b>Gene Name:</b>	KH RNA binding domain containing, signal transduction associated 2
<b>Database Link:</b>	<a href="#">NP_689901</a> <a href="#">Entrez Gene 170843 Rat</a> <a href="#">Entrez Gene 202559 Human</a> <a href="#">Q5VWX1</a>
<b>Background:</b>	RNA-binding protein that plays a role in the regulation of alternative splicing and influences mRNA splice site selection and exon inclusion. Its phosphorylation by FYN inhibits its ability to regulate splice site selection. Induces an increased concentration-dependent incorporation of exon in CD44 pre-mRNA by direct binding to purine-rich exonic enhancer. May function as an adapter protein for Src kinases during mitosis. Binds both poly(A) and poly(U) homopolymers. Phosphorylation by PTK6 inhibits its RNA-binding ability (By similarity).
<b>Synonyms:</b>	SLM-1; SLM1



[View online »](#)

**Product images:**

KHDRBS2 Antibody (C-term) (Cat. #TA328133) western blot analysis in HeLa cell line and rat testis tissue lysates (35ug/lane). This demonstrates the KHDRBS2 antibody detected the KHDRBS2 protein (arrow).