

Product datasheet for **TA328132S**

CD46 Rabbit Polyclonal Antibody

Product data:

Product Type:	Primary Antibodies
Applications:	WB
Recommended Dilution:	WB: 1:1000
Reactivity:	Human
Host:	Rabbit
Isotype:	Ig
Clonality:	Polyclonal
Immunogen:	This CD46 antibody is generated from rabbits immunized with a KLH conjugated synthetic peptide between 330-361 amino acids from the Central region of human CD46.
Formulation:	PBS with 0.09% (W/V) sodium azide
Concentration:	lot specific
Purification:	This antibody is purified through a protein A column, followed by peptide affinity purification.
Conjugation:	Unconjugated
Storage:	Store at -20°C as received.
Stability:	Stable for 12 months from date of receipt.
Gene Name:	CD46 molecule
Database Link:	NP_758861 Entrez Gene 4179 Human P15529
Background:	Acts as a cofactor for complement factor I, a serine protease which protects autologous cells against complement-mediated injury by cleaving C3b and C4b deposited on host tissue. May be involved in the fusion of the spermatozoa with the oocyte during fertilization. Also acts as a costimulatory factor for T-cells which induces the differentiation of CD4+ into T-regulatory 1 cells. T-regulatory 1 cells suppress immune responses by secreting interleukin-10, and therefore are thought to prevent autoimmunity. A number of viral and bacterial pathogens seem to exploit this property and directly induce an immunosuppressive phenotype in T-cells by binding to CD46.
Synonyms:	AHUS2; MCP; MIC10; TLX; TRA2.10

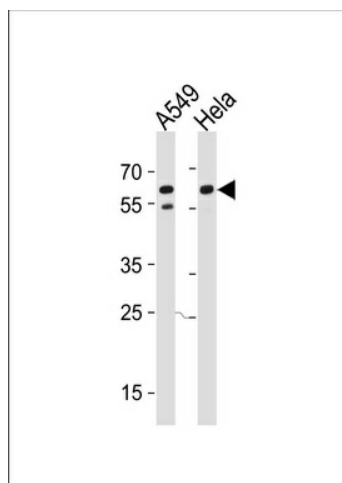


[View online »](#)

Protein Families: Druggable Genome, Transmembrane

Protein Pathways: Complement and coagulation cascades

Product images:



CD46 Antibody (Y354) (Cat. #[TA328132]) western blot analysis in A549, HeLa cell line lysates (35ug/lane). This demonstrates the CD46 antibody detected the CD46 protein (arrow).