

## Product datasheet for **TA328128S**

### ATG4B Rabbit Polyclonal Antibody

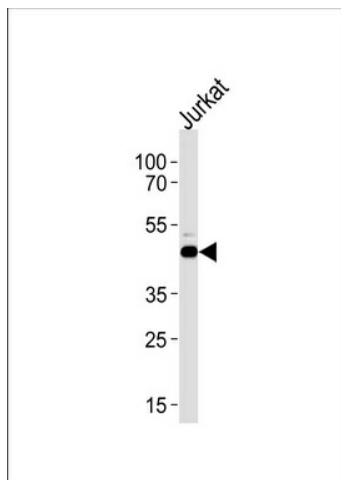
#### Product data:

Product Type:	Primary Antibodies
Applications:	WB
Recommended Dilution:	WB: 1:1000
Reactivity:	Human (Predicted: Mouse, Zebrafish, Bovine, Chicken)
Host:	Rabbit
Isotype:	Ig
Clonality:	Polyclonal
Immunogen:	This ATG4B antibody is generated from rabbits immunized with a KLH conjugated synthetic peptide between 250-290 amino acids from the Central region of human ATG4B.
Formulation:	PBS with 0.09% (W/V) sodium azide
Concentration:	lot specific
Purification:	This antibody is purified through a protein A column, followed by peptide affinity purification.
Conjugation:	Unconjugated
Storage:	Store at -20°C as received.
Stability:	Stable for 12 months from date of receipt.
Gene Name:	autophagy related 4B cysteine peptidase
Database Link:	<a href="#">NP_847896</a> <a href="#">Entrez Gene 66615 Mouse</a> <a href="#">Entrez Gene 23192 Human</a> <a href="#">Q9Y4P1</a>
Background:	Cysteine protease required for autophagy, which cleaves the C-terminal part of either MAP1LC3, GABARAPL2 or GABARAP, allowing the liberation of form I. A subpopulation of form I is subsequently converted to a smaller form (form II). Form II, with a revealed C-terminal glycine, is considered to be the phosphatidylethanolamine (PE)-conjugated form, and has the capacity for the binding to autophagosomes.
Synonyms:	APG4B; AUTL1
Protein Families:	Protease
Protein Pathways:	Regulation of autophagy



[View online »](#)

## Product images:



ATG4B Antibody (Center) (Cat. #[TA328128]) western blot analysis in Jurkat cell line lysates (35ug/lane). This demonstrates the ATG4B antibody detected the ATG4B protein (arrow).