

Product datasheet for TA328124S

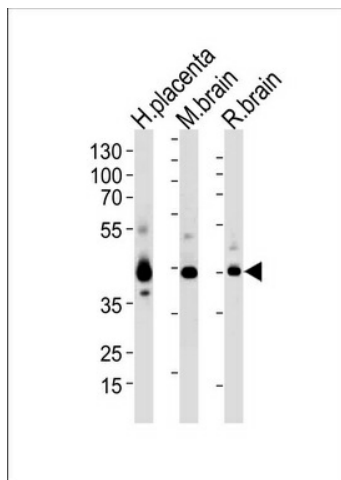
Junctional Adhesion Molecule C (JAM3) Rabbit Polyclonal Antibody

Product data:

Product Type:	Primary Antibodies
Applications:	WB
Recommended Dilution:	WB: 1:1000
Reactivity:	Human, Mouse, Rat
Host:	Rabbit
Isotype:	Ig
Clonality:	Polyclonal
Immunogen:	This JAM3 antibody is generated from a rabbit immunized with a KLH conjugated synthetic peptide between 261-295 amino acids from the C-terminal region of human JAM3.
Formulation:	PBS with 0.09% (W/V) sodium azide
Concentration:	lot specific
Purification:	This antibody is purified through a protein A column, followed by peptide affinity purification.
Conjugation:	Unconjugated
Storage:	Store at -20°C as received.
Stability:	Stable for 12 months from date of receipt.
Gene Name:	junctional adhesion molecule 3
Database Link:	NP_116190 Entrez Gene 83964 Mouse Entrez Gene 315509 Rat Entrez Gene 83700 Human Q9BX67
Background:	Participates in cell-cell adhesion. It is a counter- receptor for ITGAM, mediating leukocyte-platelet interactions and is involved in the regulation of transepithelial migration of polymorphonuclear neutrophils (PMN). The soluble form is a mediator of angiogenesis.
Synonyms:	JAM-2; JAM-3; JAM-C; JAMC
Protein Families:	Druggable Genome, Transmembrane
Protein Pathways:	Cell adhesion molecules (CAMs), Epithelial cell signaling in Helicobacter pylori infection, Leukocyte transendothelial migration, Tight junction


[View online »](#)

Product images:



Western blot analysis of lysates from human placenta, mouse brain and rat brain tissue (from left to right), using JAM3 Antibody (C-term) (Cat. # [TA328124]). [TA328124] was diluted at 1:1000 at each lane. A goat anti-rabbit (HRP) at 1:5000 dilution was used as the secondary antibody. Lysates at 35ug per lane.