

## Product datasheet for **TA328123S**

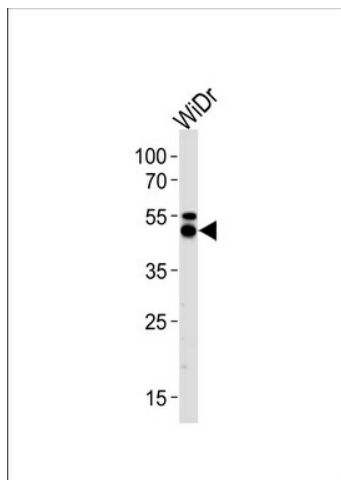
### Cytokeratin 20 (KRT20) Rabbit Polyclonal Antibody

#### Product data:

Product Type:	Primary Antibodies
Applications:	WB
Recommended Dilution:	WB: 1:1000
Reactivity:	Human
Host:	Rabbit
Isotype:	Ig
Clonality:	Polyclonal
Immunogen:	This KRT20 antibody is generated from rabbits immunized with a KLH conjugated synthetic peptide between 377-401 amino acids from the C-terminal region of human KRT20.
Formulation:	PBS with 0.09% (W/V) sodium azide
Concentration:	lot specific
Purification:	This antibody is purified through a protein A column, followed by peptide affinity purification.
Conjugation:	Unconjugated
Storage:	Store at -20°C as received.
Stability:	Stable for 12 months from date of receipt.
Gene Name:	keratin 20
Database Link:	<a href="#">NP_061883</a> <a href="#">Entrez Gene 54474 Human</a> <a href="#">P35900</a>
Background:	Plays a significant role in maintaining keratin filament organization in intestinal epithelia. When phosphorylated, plays a role in the secretion of mucin in the small intestine (By similarity).
Synonyms:	CD20; CK-20; CK20; K20; KRT21

[View online »](#)

## Product images:



KRT20 Antibody (C-term) (Cat. #TA328123])  
western blot analysis in WiDr cell line lysates  
(35ug/lane). This demonstrates the KRT20  
antibody detected the KRT20 protein (arrow).