

Product datasheet for **TA328122S**

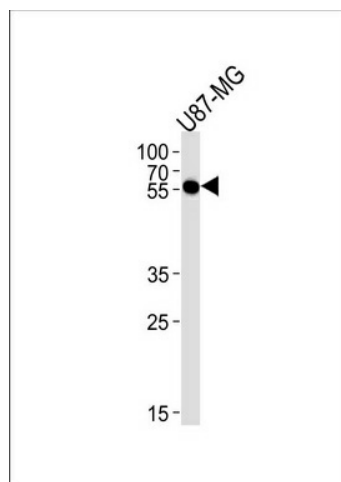
CMAS Rabbit Polyclonal Antibody

Product data:

Product Type:	Primary Antibodies
Applications:	WB
Recommended Dilution:	WB: 1:1000
Reactivity:	Human (Predicted: Mouse, Rat, Bovine)
Host:	Rabbit
Isotype:	Ig
Clonality:	Polyclonal
Immunogen:	This CMAS antibody is generated from rabbits immunized with a KLH conjugated synthetic peptide between 300-327 amino acids from the C-terminal region of human CMAS.
Formulation:	PBS with 0.09% (W/V) sodium azide
Concentration:	lot specific
Purification:	This antibody is purified through a protein A column, followed by peptide affinity purification.
Conjugation:	Unconjugated
Storage:	Store at -20°C as received.
Stability:	Stable for 12 months from date of receipt.
Gene Name:	cytidine monophosphate N-acetylneuraminic acid synthetase
Database Link:	NP_061156 Entrez Gene 12764 Mouse Entrez Gene 312826 Rat Entrez Gene 55907 Human Q8NFW8
Background:	Catalyzes the activation of N-acetylneuraminic acid (NeuNAc) to cytidine 5'-monophosphate N-acetylneuraminic acid (CMP-NeuNAc), a substrate required for the addition of sialic acid. Has some activity toward NeuNAc, N-glycolylneuraminic acid (Neu5Gc) or 2-keto-3-deoxy-D-glycero-D-galacto-nononic acid (KDN).
Synonyms:	CSS
Protein Pathways:	Amino sugar and nucleotide sugar metabolism, Metabolic pathways



[View online »](#)

Product images:

CMAS Antibody (C-term) (Cat. #[TA328122])
western blot analysis in U87-MG cell line lysates
(35ug/lane). This demonstrates the CMAS
antibody detected the CMAS protein (arrow).