

Product datasheet for **TA328120**

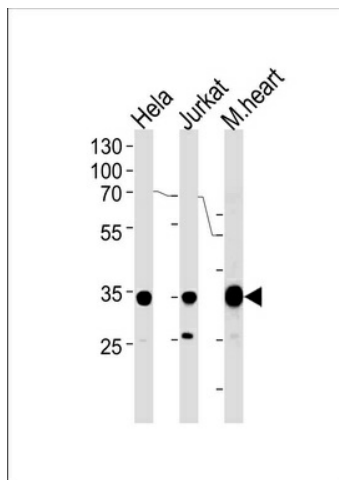
NDUFA9 Rabbit Polyclonal Antibody

Product data:

Product Type:	Primary Antibodies
Applications:	WB
Recommended Dilution:	WB: 1:1000
Reactivity:	Human, Mouse
Host:	Rabbit
Isotype:	Ig
Clonality:	Polyclonal
Immunogen:	This NDUFA9 antibody is generated from rabbits immunized with a KLH conjugated synthetic peptide between 99-121 amino acids from the Central region of human NDUFA9.
Formulation:	PBS with 0.09% (W/V) sodium azide
Concentration:	lot specific
Purification:	This antibody is purified through a protein A column, followed by peptide affinity purification.
Conjugation:	Unconjugated
Storage:	Store at -20°C as received.
Stability:	Stable for 12 months from date of receipt.
Gene Name:	NADH:ubiquinone oxidoreductase subunit A9
Database Link:	NP_004993 Entrez Gene 66108 Mouse Entrez Gene 4704 Human Q16795
Background:	Accessory subunit of the mitochondrial membrane respiratory chain NADH dehydrogenase (Complex I), that is believed not to be involved in catalysis. Complex I functions in the transfer of electrons from NADH to the respiratory chain. The immediate electron acceptor for the enzyme is believed to be ubiquinone.
Synonyms:	CC6; CI-39k; CI39k; NDUFS2L; SDR22E1
Protein Pathways:	Alzheimer's disease, Huntington's disease, Metabolic pathways, Oxidative phosphorylation, Parkinson's disease



[View online »](#)

Product images:

NDUFA9 Antibody (Center) (Cat. #TA328120) western blot analysis in HeLa, Jurkat cell line and mouse heart tissue lysates (35ug/lane). This demonstrates the NDUFA9 antibody detected the NDUFA9 protein (arrow).