

Product datasheet for **TA328119S**

VAMP8 Rabbit Polyclonal Antibody

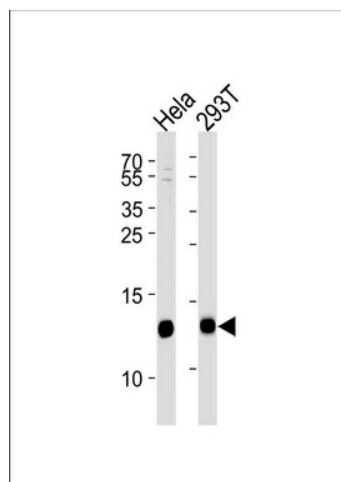
Product data:

Product Type:	Primary Antibodies
Applications:	WB
Recommended Dilution:	WB: 1:1000
Reactivity:	Human
Host:	Rabbit
Isotype:	Ig
Clonality:	Polyclonal
Immunogen:	This VAMP8 antibody is generated from rabbits immunized with a KLH conjugated synthetic peptide between 1-30 amino acids from the N-terminal region of human VAMP8.
Formulation:	PBS with 0.09% (W/V) sodium azide
Concentration:	lot specific
Purification:	This antibody is purified through a protein A column, followed by peptide affinity purification.
Conjugation:	Unconjugated
Storage:	Store at -20°C as received.
Stability:	Stable for 12 months from date of receipt.
Gene Name:	vesicle associated membrane protein 8
Database Link:	NP_003752 Entrez Gene 8673 Human Q9BV40
Background:	Involved in the targeting and/or fusion of transport vesicles to their target membrane. Involved for dense-granule secretion in platelets. Plays a role in regulated enzyme secretion in pancreatic acinar cells. Involved in the abscission of the midbody during cell division, which leads to completely separate daughter cells. Involved in the homotypic fusion of early and late endosomes (By similarity).
Synonyms:	EDB; VAMP-8
Protein Families:	Stem cell - Pluripotency, Transmembrane
Protein Pathways:	SNARE interactions in vesicular transport



[View online »](#)

Product images:



VAMP8 Antibody (N-term) (Cat. #[TA328119])
western blot analysis in HeLa, 293T cell line
lysates (35ug/lane). This demonstrates the VAMP8
antibody detected the VAMP8 protein (arrow).