

Product datasheet for **TA328118S**

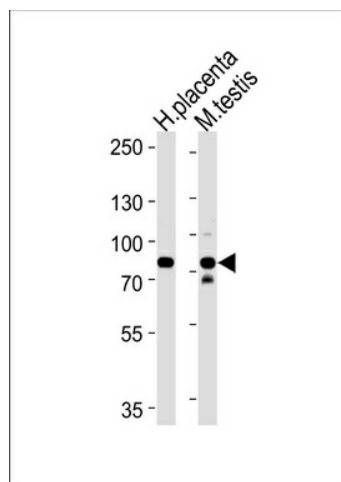
Semaphorin 7a (SEMA7A) Rabbit Polyclonal Antibody

Product data:

Product Type:	Primary Antibodies
Applications:	WB
Recommended Dilution:	WB: 1:1000
Reactivity:	Human, Mouse
Host:	Rabbit
Isotype:	Ig
Clonality:	Polyclonal
Immunogen:	This SEMA7A antibody is generated from rabbits immunized with a KLH conjugated synthetic peptide between 178-202 amino acids from the N-terminal region of human SEMA7A.
Formulation:	PBS with 0.09% (W/V) sodium azide
Concentration:	lot specific
Purification:	This antibody is purified through a protein A column, followed by peptide affinity purification.
Conjugation:	Unconjugated
Storage:	Store at -20°C as received.
Stability:	Stable for 12 months from date of receipt.
Gene Name:	semaphorin 7A (John Milton Hagen blood group)
Database Link:	NP_003603 Entrez Gene 20361 Mouse Entrez Gene 8482 Human O75326
Background:	Plays an important role in integrin-mediated signaling and functions both in regulating cell migration and immune responses. Promotes formation of focal adhesion complexes, activation of the protein kinase PTK2/FAK1 and subsequent phosphorylation of MAPK1 and MAPK3. Promotes production of proinflammatory cytokines by monocytes and macrophages. Plays an important role in modulating inflammation and T-cell-mediated immune responses. Promotes axon growth in the embryonic olfactory bulb. Promotes attachment, spreading and dendrite outgrowth in melanocytes.
Synonyms:	CD108; CDw108; H-SEMA-K1; H-Sema-L; JMH; SEMAK1; SEMAL
Protein Pathways:	Axon guidance


[View online »](#)

Product images:



SEMA7A Antibody (N-term) (Cat. #TA328118S) western blot analysis in human placenta and mouse testis tissue lysates (35ug/lane). This demonstrates the SEMA7A antibody detected the SEMA7A protein (arrow).