

Product datasheet for **TA328116S**

Phospholamban (PLN) Rabbit Polyclonal Antibody

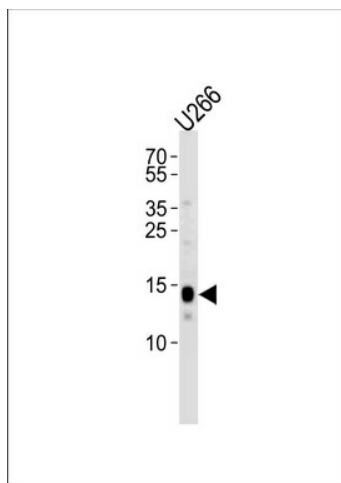
Product data:

Product Type:	Primary Antibodies
Applications:	WB
Recommended Dilution:	WB: 1:1000
Reactivity:	Human (Predicted: Mouse, Rat, Bovine, Pig, Rabbit)
Host:	Rabbit
Isotype:	Ig
Clonality:	Polyclonal
Immunogen:	This PLN antibody is generated from a rabbit immunized with a KLH conjugated synthetic peptide between 1-22 amino acids from the N-terminal region of human PLN.
Formulation:	PBS with 0.09% (W/V) sodium azide
Concentration:	lot specific
Purification:	This antibody is purified through a protein A column, followed by peptide affinity purification.
Conjugation:	Unconjugated
Storage:	Store at -20°C as received.
Stability:	Stable for 12 months from date of receipt.
Gene Name:	phospholamban
Database Link:	NP_002658 Entrez Gene 18821 Mouse Entrez Gene 64672 Rat Entrez Gene 5350 Human P26678
Background:	Reversibly inhibits the activity of ATP2A2 in cardiac sarcoplasmic reticulum by decreasing the apparent affinity of the ATPase for Ca(2+). Modulates the contractility of the heart muscle in response to physiological stimuli via its effects on ATP2A2 Modulates calcium re-uptake during muscle relaxation and plays an important role in calcium homeostasis in the heart muscle. The degree of ATP2A2 inhibition depends on the oligomeric state of PLN. ATP2A2 inhibition is alleviated by PLN phosphorylation.
Synonyms:	CMD1P; CMH18; PLB
Protein Families:	Transmembrane


[View online »](#)

Protein Pathways: Calcium signaling pathway, Dilated cardiomyopathy

Product images:



Western blot analysis of lysate from U266 cell line, using PLN Antibody (N-term) (Cat. # [TA328116]).[TA328116] was diluted at 1:1000 at each lane. A goat anti-rabbit IgG H&L (HRP) at 1:5000 dilution was used as the secondary antibody. Lysate at 35ug per lane.