

Product datasheet for **TA328115S**

NRAS Mouse Monoclonal Antibody [Clone ID: 822CT17.5.1]

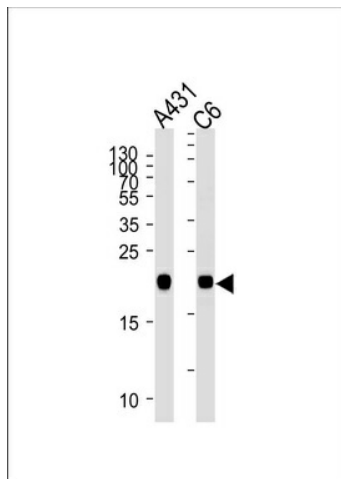
Product data:

Product Type:	Primary Antibodies
Clone Name:	822CT17.5.1
Applications:	WB
Recommended Dilution:	WB: 1:1000
Reactivity:	Human, Rat (Predicted: Mouse, Chicken, Pig)
Host:	Mouse
Isotype:	IgG1
Clonality:	Monoclonal
Immunogen:	This NRAS antibody is generated from mice immunized with a KLH conjugated synthetic peptide between 70-101 amino acids from the N-terminal region of human NRAS.
Formulation:	PBS with 0.09% (W/V) sodium azide
Concentration:	lot specific
Purification:	This antibody is purified through a protein G column, followed by dialysis against PBS.
Conjugation:	Unconjugated
Storage:	Store at -20°C as received.
Stability:	Stable for 12 months from date of receipt.
Gene Name:	neuroblastoma RAS viral oncogene homolog
Database Link:	NP_002515 Entrez Gene 18176 Mouse Entrez Gene 24605 Rat Entrez Gene 4893 Human P01111
Background:	Ras proteins bind GDP/GTP and possess intrinsic GTPase activity.
Synonyms:	ALPS4; CMNS; N-ras; NCMS; NRAS1; NS6
Protein Families:	Druggable Genome

[View online »](#)

Protein Pathways:

Acute myeloid leukemia, Axon guidance, B cell receptor signaling pathway, Bladder cancer, Chemokine signaling pathway, Chronic myeloid leukemia, Endometrial cancer, ErbB signaling pathway, Fc epsilon RI signaling pathway, Gap junction, Glioma, GnRH signaling pathway, Insulin signaling pathway, Long-term depression, Long-term potentiation, MAPK signaling pathway, Melanogenesis, Melanoma, Natural killer cell mediated cytotoxicity, Neurotrophin signaling pathway, Non-small cell lung cancer, Pathways in cancer, Prostate cancer, Regulation of actin cytoskeleton, Renal cell carcinoma, T cell receptor signaling pathway, Thyroid cancer, Tight junction, VEGF signaling pathway

Product images:


NRAS Antibody (N-term) (Cat. #TA328115S)
western blot analysis in A431 and rat C6 cell line
lysates (35ug/lane). This demonstrates the NRAS
antibody detected the NRAS protein (arrow).