

Product datasheet for **TA328114**

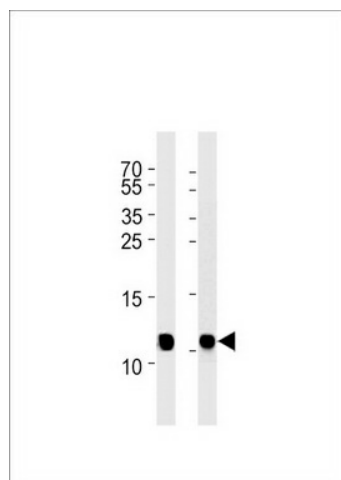
NDUFA4 Rabbit Polyclonal Antibody

Product data:

Product Type:	Primary Antibodies
Applications:	WB
Recommended Dilution:	WB: 1:1000
Reactivity:	Human
Host:	Rabbit
Isotype:	Ig
Clonality:	Polyclonal
Immunogen:	This NDUFA4 antibody is generated from rabbits immunized with a KLH conjugated synthetic peptide between 56-80 amino acids from the C-terminal region of human NDUFA4.
Formulation:	PBS with 0.09% (W/V) sodium azide
Concentration:	lot specific
Purification:	This antibody is purified through a protein A column, followed by peptide affinity purification.
Conjugation:	Unconjugated
Storage:	Store at -20°C as received.
Stability:	Stable for 12 months from date of receipt.
Gene Name:	NDUFA4, mitochondrial complex associated
Database Link:	NP_002480 Entrez Gene 4697 Human O00483
Background:	Accessory subunit of the mitochondrial membrane respiratory chain NADH dehydrogenase (Complex I), that is believed to be not involved in catalysis. Complex I functions in the transfer of electrons from NADH to the respiratory chain. The immediate electron acceptor for the enzyme is believed to be ubiquinone.
Synonyms:	CI-9k; CI-MLRQ; MLRQ
Protein Families:	Transmembrane
Protein Pathways:	Alzheimer's disease, Huntington's disease, Metabolic pathways, Oxidative phosphorylation, Parkinson's disease



[View online »](#)

Product images:

NDUA4 Antibody (C-term) (Cat. #TA328114)
western blot analysis in SW480, HeLa cell line
lysates (35ug/lane). This demonstrates the NDUFA4
antibody detected the NDUFA4 protein (arrow).