

## Product datasheet for **TA328113**

### Creatine kinase B type (CKB) Mouse Monoclonal Antibody [Clone ID: 893CT29.1.1]

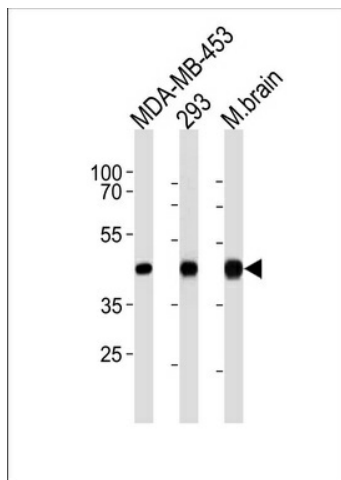
#### Product data:

Product Type:	Primary Antibodies
Clone Name:	893CT29.1.1
Applications:	WB
Recommended Dilution:	WB: 1:2000
Reactivity:	Human, Mouse
Host:	Mouse
Isotype:	IgG1
Clonality:	Monoclonal
Immunogen:	Purified His-tagged CKB protein was used to produced this monoclonal antibody.
Formulation:	crude ascites with 0.09% (W/V) sodium azide
Purification:	Mouse monoclonal antibody supplied in crude ascites with 0.09% (W/V) sodium azide.
Conjugation:	Unconjugated
Storage:	Store at -20°C as received.
Stability:	Stable for 12 months from date of receipt.
Gene Name:	creatine kinase B
Database Link:	<a href="#">NP_001814</a> <a href="#">Entrez Gene 12709 Mouse</a> <a href="#">Entrez Gene 1152 Human</a> <a href="#">P12277</a>
Background:	Reversibly catalyzes the transfer of phosphate between ATP and various phosphogens (e.g. creatine phosphate). Creatine kinase isoenzymes play a central role in energy transduction in tissues with large, fluctuating energy demands, such as skeletal muscle, heart, brain and spermatozoa.
Synonyms:	B-CK; BCK; CKBB; HEL-211; HEL-S-29
Protein Families:	Druggable Genome
Protein Pathways:	Arginine and proline metabolism, Metabolic pathways



[View online »](#)

## Product images:



Creatine Kinase BB (CKB) Antibody (Center) (Cat. #TA328113) western blot analysis in MDA-MB-453, 293 cell line and mouse brain tissue lysates (35ug/lane). This demonstrates the Creatine Kinase BB (CKB) antibody detected the Creatine Kinase BB (CKB) protein (arrow).