

Product datasheet for **TA328109S**

CLIC1 Rabbit Polyclonal Antibody

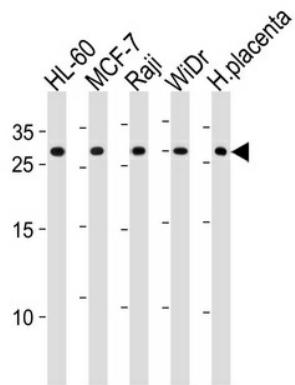
Product data:

Product Type:	Primary Antibodies
Applications:	WB
Recommended Dilution:	WB: 1:1000
Reactivity:	Human
Host:	Rabbit
Isotype:	Ig
Clonality:	Polyclonal
Immunogen:	This CLIC1 antibody is generated from rabbits immunized with a KLH conjugated synthetic peptide between 136-166 amino acids from the Central region of human CLIC1.
Formulation:	PBS with 0.09% (W/V) sodium azide
Concentration:	lot specific
Purification:	This antibody is purified through a protein A column, followed by peptide affinity purification.
Conjugation:	Unconjugated
Storage:	Store at -20°C as received.
Stability:	Stable for 12 months from date of receipt.
Gene Name:	chloride intracellular channel 1
Database Link:	NP_001279 Entrez Gene 1192 Human O00299
Background:	Can insert into membranes and form chloride ion channels. Channel activity depends on the pH. Membrane insertion seems to be redox-regulated and may occur only under oxydizing conditions. Involved in regulation of the cell cycle.
Synonyms:	G6; NCC27
Protein Families:	Druggable Genome, Ion Channels: Other



[View online »](#)

Product images:



CLIC1 Antibody (Center) (Cat. #[TA328109])
western blot analysis in HL-60, MCF-7, Raji, WiDr
cell line and human placenta tissue lysates
(35ug/lane). This demonstrates the CLIC1
antibody detected the CLIC1 protein (arrow).