

## Product datasheet for **TA328088**

### myosin heavy chain 9 (MYH9) Rabbit Polyclonal Antibody [Clone ID: Poly6212]

#### Product data:

Product Type:	Primary Antibodies
Clone Name:	Poly6212
Applications:	IF
Recommended Dilution:	IF
Reactivity:	Human, Rat
Host:	Rabbit
Isotype:	IgG
Clonality:	Polyclonal
Immunogen:	Recombinant
Formulation:	This antibody is provided in phosphate-buffered solution, pH 7.2, containing 0.09% sodium azide and 50% glycerol.
Purification:	The antibody was purified by antigen-affinity chromatography.
Conjugation:	Unconjugated
Storage:	Store at -20°C as received.
Stability:	Stable for 12 months from date of receipt.
Predicted Protein Size:	223 kD
Gene Name:	myosin, heavy chain 9, non-muscle
Database Link:	<a href="#">NP_002464</a> <a href="#">Entrez Gene 100911597 Rat</a> <a href="#">Entrez Gene 4627 Human</a> <a href="#">P35579</a>



[View online »](#)

**Background:**

Myosin heavy chain is an actin-based motor protein with an approximate molecular weight of 223 kD. Myosin heavy chain can be split into 1 light meromyosin and 1 heavy meromyosin chain (and further into 2 globular subfragments and 1 rod-shaped subfragment). This protein is highly expressed in muscle. Motor proteins that convert chemical energy derived from ATP hydrolysis into mechanical force that drives motile processes such as cytokinesis, vesicular transport, and cellular locomotion. Myosin heavy chain is modified by acetylation in cysteine residues in the S1 domain for myosin ATPase activity. Muscle myosin is a hexameric protein consisting of 2 heavy chain subunits and 2 alkali light chain subunits and 2 regulatory light chain subunits that forms filaments.

**Synonyms:**

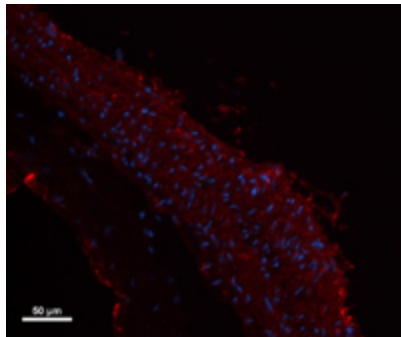
BDPLT6; DFNA17; EPSTS; FTNS; MHA; NMHC-II-A; NMMHC-IIA; NMMHCA

**Protein Families:**

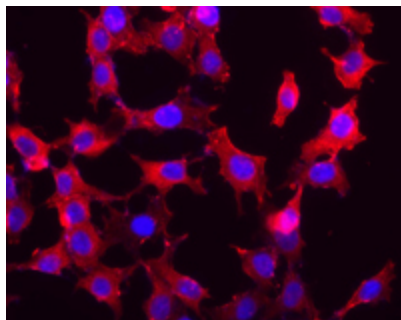
Druggable Genome

**Protein Pathways:**

Regulation of actin cytoskeleton, Tight junction, Viral myocarditis

**Product images:**

Rat carotid artery frozen sections were stained with Poly6212, followed by anti-rabbit Alexa Fluor® 594 and DAPI staining.



HeLa cells stained with purified rabbit polyclonal antibody against Myosin heavy chain (poly6212), followed by Cy3 conjugated Donkey anti-rabbit IgG and DAPI.