

Product datasheet for **TA328076**

COX15 Mouse Monoclonal Antibody [Clone ID: 7H8.2C12]

Product data:

Product Type:	Primary Antibodies
Clone Name:	7H8.2C12
Applications:	WB
Recommended Dilution:	WB
Reactivity:	Broad
Host:	Mouse
Isotype:	IgG2a, kappa
Clonality:	Monoclonal
Immunogen:	Horse cyt c-OVA
Formulation:	This antibody is provided in phosphate-buffered solution, pH 7.2, containing 0.09% sodium azide.
Purification:	The antibody was purified by affinity chromatography.
Conjugation:	Unconjugated
Storage:	Store at -20°C as received.
Stability:	Stable for 12 months from date of receipt.
Predicted Protein Size:	15 kD
Gene Name:	COX15 cytochrome c oxidase assembly homolog
Database Link:	NP_004367 Entrez Gene 1355 Human Q7KZN9
Background:	Cytochrome c is a 15 kD protein found in the mitochondrial intermembrane space with a heme-binding domain. Cytochrome c is a component of the electron transport chain; the heme group transfers electrons from cytochrome b-c1 complex to cytochrome oxidase complex. Cytochrome c initiates apoptosis by release to cytoplasm and binding Apaf-1 which activates procaspase 9. Cytochrome c interacts with the cytochrome b-c1 complex, cytochrome oxidase complex, heme, Apaf-1, and Caspase 9 proteins. The 7H8.2C12 monoclonal antibody recognizes cytochrome-c from most species and has been shown to be useful for Western blotting.



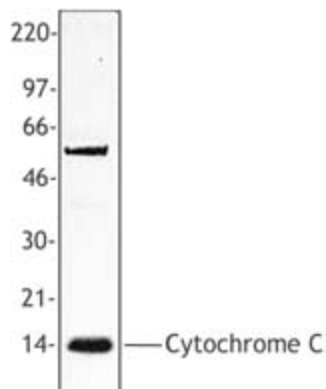
[View online »](#)

Synonyms: CEMCOX2

Protein Families: Transmembrane

Protein Pathways: Metabolic pathways, Oxidative phosphorylation, Porphyrin and chlorophyll metabolism

Product images:



Hela cell extract was resolved by electrophoresis, transferred to nitrocellulose, and probed with anti-cytochrome C (clone 7H8.2C12) antibody. Proteins were visualized using a goat anti-mouse secondary conjugated to HRP and a chemiluminescence detection system.