

Product datasheet for **TA328070**

Actb Rabbit Polyclonal Antibody [Clone ID: Poly6221]

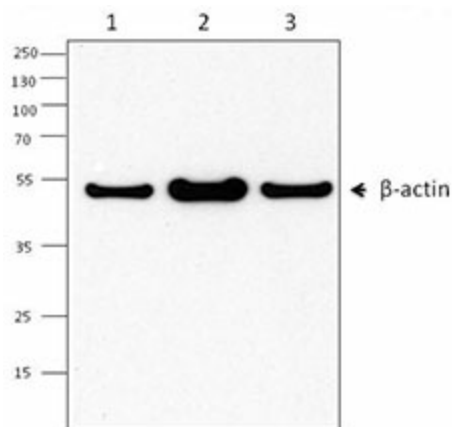
Product data:

Product Type:	Primary Antibodies
Clone Name:	Poly6221
Applications:	IF, IHC, WB
Recommended Dilution:	WB, IF, IHC
Reactivity:	Mouse, Rat, Human
Host:	Rabbit
Isotype:	IgG
Clonality:	Polyclonal
Immunogen:	Peptide-KLH, NH2 terminus
Formulation:	This antibody is provided in phosphate-buffered solution, pH 7.2, containing 0.09% sodium azide and 50% glycerol.
Purification:	The antibody was purified by affinity chromatography.
Conjugation:	Unconjugated
Storage:	Store at -20°C as received.
Stability:	Stable for 12 months from date of receipt.
Predicted Protein Size:	42 KD
Gene Name:	actin, beta
Database Link:	NP_031419 Entrez Gene 60 Human Entrez Gene 81822 Rat Entrez Gene 11461 Mouse P60710
Background:	β -actin is a ubiquitously expressed and highly conserved 42 kD cytoplasmic protein involved in cell motility. This critical cytoskeletal component can be disrupted by drugs such as cytochalasin. Because β -actin is ubiquitously expressed in all eukaryotic cells, it is frequently used as a loading control for assays involving protein detection (such as Western blotting). The Poly6221 antibody has been shown to be useful for Western blotting of mouse, rat, and human β -actin.
Synonyms:	Beta-actin; PS1TP5BP1

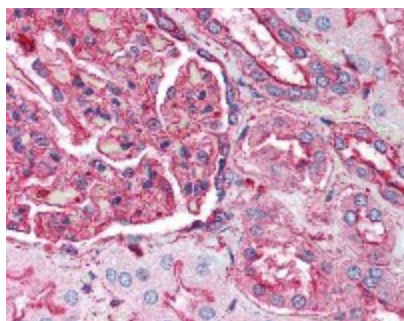


[View online »](#)

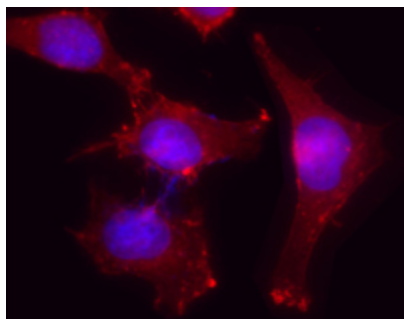
Product images:



Western blot analysis of HeLa (lane 1), mouse spleen (lane 2) and NIH3T3 (lane 3) cells, using anti- β -actin antibody (poly6221).



Formalin-fixed paraffin-embedded human kidney tissue was stained with Poly6221 and developed with an alkaline phosphatase chromogen substrate (red color). Tissue was counterstained with H&E (blue/pink). Magnification, 40X.



Immunofluorescent microscope analysis of HeLa cells using Poly6221, followed by Rhodamine Red-X goat anti-rabbit IgG and DAPI.