

Product datasheet for **TA328066**

gamma Tubulin (TUBG1) Rabbit Polyclonal Antibody [Clone ID: Poly6209]

Product data:

Product Type:	Primary Antibodies
Clone Name:	Poly6209
Applications:	IF, WB
Recommended Dilution:	IF, WB
Reactivity:	Human, Mouse
Host:	Rabbit
Isotype:	IgG
Clonality:	Polyclonal
Immunogen:	Peptide-KLH
Formulation:	This antibody is provided in phosphate-buffered solution, pH 7.2, containing 0.09% sodium azide and 50% glycerol.
Purification:	The antibody was purified by antigen-affinity chromatography.
Conjugation:	Unconjugated
Storage:	Store at -20°C as received.
Stability:	Stable for 12 months from date of receipt.
Predicted Protein Size:	51 kD
Gene Name:	tubulin gamma 1
Database Link:	NP_001061 Entrez Gene 103733 Mouse Entrez Gene 7283 Human P23258

Background: γ -tubulin is a 51 kD member of the tubulin superfamily and is conserved between yeast and mammals. This cytoskeletal protein is highly expressed in centrosomes and is thought to be involved in cytoskeletal organization and mitosis. γ -tubulin is expressed at highest levels during prophase to metaphase and can be modified by phosphorylation. This protein has been shown to interact with α -tubulin, paxillin, and RAC GTPase activated protein 1. The Poly6209 antibody has been shown to be useful for Western blotting of human and mouse γ -tubulin.

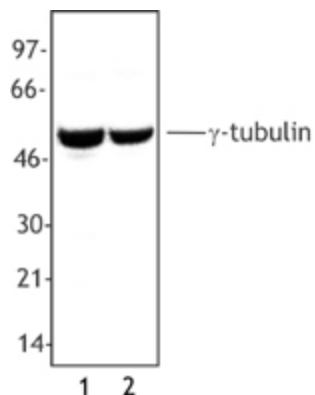
Synonyms: CDCBM4; GCP-1; TUBG; TUBGCP1



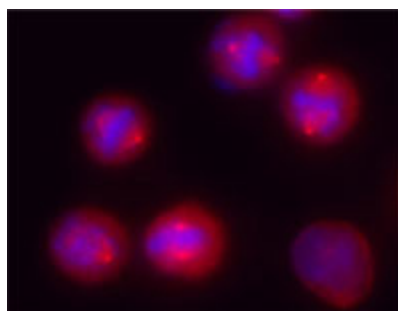
[View online »](#)

Protein Families: Druggable Genome

Product images:



Whole cell extract from A431 cells (Lane 1) and NIH3T3 cells (Lane 2) were resolved by electrophoresis, transferred to nitrocellulose and probed with rabbit anti- γ -tubulin antibody. Proteins were visualized using a donkey anti-rabbit secondary conjugated to HRP and a chemiluminescence detection system.



Overnight nocodazole treated HeLa cells stained with purified rabbit polyclonal antibody against γ -tubulin, followed by Rhodamine Red-X conjugated goat anti-rabbit IgG and DAPI.