

Product datasheet for **TA328062**

PRC1 Mouse Monoclonal Antibody [Clone ID: 6G2]

Product data:

Product Type:	Primary Antibodies
Clone Name:	6G2
Applications:	WB
Recommended Dilution:	WB
Reactivity:	Human
Host:	Mouse
Isotype:	IgG2b, kappa
Clonality:	Monoclonal
Immunogen:	Amino Acid: 1-150
Formulation:	This antibody is provided in phosphate-buffered solution, pH 7.2, containing 0.09% sodium azide at 0.5 mg/ml.
Concentration:	lot specific
Purification:	The antibody was purified by affinity chromatography.
Conjugation:	Unconjugated
Storage:	Store at -20°C as received.
Stability:	Stable for 12 months from date of receipt.
Predicted Protein Size:	72 kD
Gene Name:	protein regulator of cytokinesis 1
Database Link:	NP_955445 Entrez Gene 9055 Human O43663



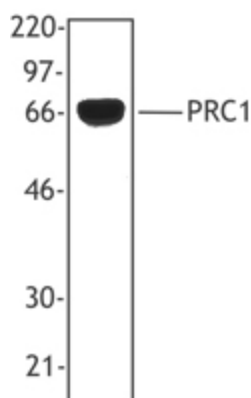
[View online »](#)

Background:

PRC1 (also known as protein regulator of cytokinesis 1 and mitotic spindle-associated CDK substrate) is a member of the MAP65/ASE1 family with a molecular weight of approximately 72 kD. PRC1 localization changes with cell-cycle position and can be found in the nucleus, the mitotic spindle, and the cell mid-body. PRC1 is a mitotic spindle-associated CDK substrate protein required for cytokinesis and maintenance of the spindle midzone. PRC1 can be modified by phosphorylation and has been shown to interact with Cdc2 and Cdk2. The 6G2 antibody recognizes the human PRC1 protein and has been shown to be useful for Western blotting.

Synonyms:

ASE1

Product images:

HeLa cell extracts were resolved by electrophoresis, transferred to nitrocellulose, and probed with monoclonal antibody reactive against PRC1 (clone 6G2). Proteins were visualized using a goat anti-mouse secondary conjugated to HRP and a chemiluminescence detection system.