

## Product datasheet for **TA328051**

### **ERK2 (MAPK1) Rabbit Polyclonal Antibody [Clone ID: Poly6242]**

#### **Product data:**

Product Type:	Primary Antibodies
Clone Name:	Poly6242
Applications:	IHC, WB
Recommended Dilution:	WB, IHC, IP
Reactivity:	Rat, Human, Mouse
Host:	Rabbit
Isotype:	IgG
Clonality:	Polyclonal
Immunogen:	Peptide mapping to the carboxy terminus of rat ERK2
Formulation:	This antibody is provided in phosphate-buffered solution, pH 7.2, containing 0.09% sodium azide, 50% glycerol, and 0.1% gelatin.
Purification:	The antibody was purified by affinity chromatography.
Conjugation:	Unconjugated
Storage:	Store at -20°C as received.
Stability:	Stable for 12 months from date of receipt.
Predicted Protein Size:	42 kD
Gene Name:	mitogen-activated protein kinase 1
Database Link:	<a href="#">NP_620407</a> <a href="#">Entrez Gene 26413 Mouse</a> <a href="#">Entrez Gene 116590 Rat</a> <a href="#">Entrez Gene 5594 Human</a> <a href="#">P28482</a>



[View online »](#)

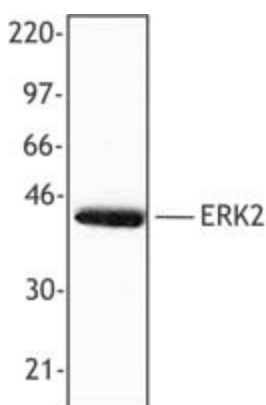
**Background:** ERK2 is a 42 kD dual specificity kinase also known as mitogen activated protein kinase 1, extracellular signal regulated kinase 2, MAPK1, and p41mapk. The MAPK family includes several subgroups encompassing the ERK, JNK, and p38 kinases. ERK is phosphorylated in response to various extracellular signals inducing homodimerization and nuclear translocation where it phosphorylates target proteins regulating cell growth and survival. ERK2 interacts with a number of proteins including STAT5A, estrogen receptor alpha, ELK1, MEK1, protein kinase c epsilon, RAF1, ribosomal S6 kinase, VAV1, STAT5b, Shc and many others. The Poly6242 antibody recognizes human, mouse, and rat ERK2 and has been shown to be useful for Western blotting, immunoprecipitation, and immunohistochemistry.

**Synonyms:** ERK; ERK-2; ERK2; ERT1; MAPK2; p38; p40; p41; p41mapk; p42-MAPK; P42MAPK; PRKM1; PRKM2

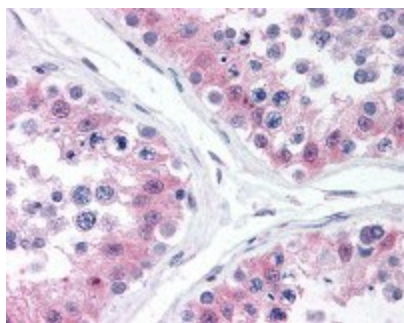
**Protein Families:** Druggable Genome, Protein Kinase

**Protein Pathways:** Acute myeloid leukemia, Adherens junction, Alzheimer's disease, Axon guidance, B cell receptor signaling pathway, Bladder cancer, Chemokine signaling pathway, Chronic myeloid leukemia, Colorectal cancer, Dorso-ventral axis formation, Endometrial cancer, ErbB signaling pathway, Fc epsilon RI signaling pathway, Fc gamma R-mediated phagocytosis, Focal adhesion, Gap junction, Glioma, GnRH signaling pathway, Insulin signaling pathway, Long-term depression, Long-term potentiation, MAPK signaling pathway, Melanogenesis, Melanoma, mTOR signaling pathway, Natural killer cell mediated cytotoxicity, Neurotrophin signaling pathway, NOD-like receptor signaling pathway, Non-small cell lung cancer, Oocyte meiosis, Pancreatic cancer, Pathways in cancer, Prion diseases, Progesterone-mediated oocyte maturation, Prostate cancer, Regulation of actin cytoskeleton, Renal cell carcinoma, T cell receptor signaling pathway, TGF-beta signaling pathway, Thyroid cancer, Toll-like receptor signaling pathway, Type II diabetes mellitus, Vascular smooth muscle contraction, VEGF signaling pathway

### Product images:



HeLa cell extract was resolved by electrophoresis, transferred to nitrocellulose, and probed with rabbit anti-ERK2 polyclonal antibody. Proteins were visualized using a donkey anti-rabbit secondary antibody conjugated to HRP and a chemiluminescence system.



Formalin-fixed paraffin-embedded human testis tissue was stained with Poly6242 and developed with an alkaline phosphatase chromogen substrate (red color). Tissue was counterstained with H&E (blue/pink). Magnification, 40X.