

Product datasheet for **TA328050**

BAX Mouse Monoclonal Antibody [Clone ID: 6A7]

Product data:

Product Type:	Primary Antibodies
Clone Name:	6A7
Applications:	IP
Recommended Dilution:	IP
Reactivity:	Human, Mouse, Rat, Monkey
Host:	Mouse
Isotype:	IgG1, kappa
Clonality:	Monoclonal
Immunogen:	Amino acid:12-24 common to human, mouse, and rat Bax protein
Formulation:	This antibody is provided in phosphate-buffered solution, pH 7.2, containing 0.09% sodium azide at 0.5 mg/ml.
Concentration:	lot specific
Purification:	The antibody was purified by affinity chromatography.
Conjugation:	Unconjugated
Storage:	Store at -20°C as received.
Stability:	Stable for 12 months from date of receipt.
Predicted Protein Size:	21 kD
Gene Name:	BCL2 associated X protein
Database Link:	NP_620116 Entrez Gene 12028 Mouse Entrez Gene 24887 Rat Entrez Gene 718948 Monkey Entrez Gene 581 Human Q07812



[View online »](#)

Background:

Bax is a 21 kD pro-apoptotic protein known to regulate apoptosis. Bax is found in the cytoplasm, mitochondria, and nucleus and is highly expressed in hematopoietic stem cells, the ovary, and in the lymph node. Bax binds the anti-apoptotic protein Bcl-2 as a heterodimer or forms homodimers. The relative levels of pro-apoptotic proteins such as Bax and anti-apoptotic proteins such as Bcl-2 determines whether cell death will occur following an apoptotic stimulus. Bax accelerates the opening of mitochondrial VDAC altering membrane potential and allowing cytochrome c to pass out of the mitochondria into the cytosol to initiate downstream caspase activation. p53 can transcriptionally activate the Bax gene to induce apoptosis. Bax has been shown to be mutated in some human cancers. Clone 2D2 has been shown to be useful for western blotting, immunoprecipitation, immunofluorescence and immunohistochemistry of the human Bax protein. This antibody does not cross-react with Bcl-2 or Bcl-XL proteins.

Synonyms:

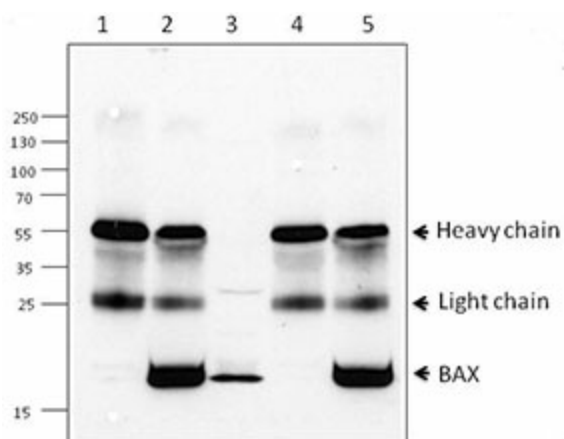
BCL2L4

Protein Families:

Druggable Genome, Transmembrane

Protein Pathways:

Amyotrophic lateral sclerosis (ALS), Apoptosis, Colorectal cancer, Huntington's disease, Neurotrophin signaling pathway, p53 signaling pathway, Pathways in cancer, Prion diseases

Product images:

Immunoprecipitation/Western blot analysis of extracts from Daudi cells (lane 1 and lane 2) and THP-1 cells (lane 4 and Lane 5). Lane 4 contains THP-1 lysate input (5%). Lane 1 and lane 4 were immunoprecipitated with mouse IgG1 isotype control antibodies and lane 2 and lane 5 were immunoprecipitated with BAX antibody (6A7). Western blot analysis was performed using rabbit anti-BAX antibody (poly6251).