

Product datasheet for **TA328039**

Cyclin B1 (CCNB1) Mouse Monoclonal Antibody [Clone ID: V152]

Product data:

Product Type:	Primary Antibodies
Clone Name:	V152
Applications:	WB
Recommended Dilution:	WB, IF, IHC
Reactivity:	Human, Mouse
Host:	Mouse
Isotype:	IgG1
Clonality:	Monoclonal
Immunogen:	Hamster Cyclin B1
Formulation:	This antibody is provided in phosphate-buffered solution, pH 7.2, containing 0.09% sodium azide. Final antibody concentration is 0.5 mg/ml.
Concentration:	lot specific
Purification:	The antibody was purified by affinity chromatography.
Conjugation:	Unconjugated
Storage:	Store at -20°C as received.
Stability:	Stable for 12 months from date of receipt.
Gene Name:	cyclin B1
Database Link:	NP_114172 Entrez Gene 268697 Mouse Entrez Gene 891 Human P14635
Background:	Cyclin B1 belongs to the cyclin family, Cyclin AB subfamily, and predicted molecular weight 48 kD. Cyclin B1 is expressed ubiquitously in all eukaryotes and the level of cyclin B1 was minimal in G, began to rise in S phase, and is primarily cytoplasmic. Cyclin B1 moves into the nucleus just at the start of mitosis and associates with condensed chromosomes and the mitotic spindle. The level of cyclin B1 peaked at the G/M transition. Cyclin B1 is essential for the control of the cell cycle at the G2/M transition. The V152 monoclonal antibody recognizes human and mouse Cyclin B1 and has been shown to be useful for Western blotting, and immunohistochemistry (paraffin embedded tissue sections) of human and mouse cyclin B1.



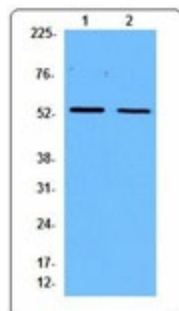
[View online »](#)

Synonyms: CCNB

Protein Families: Druggable Genome, Stem cell - Pluripotency

Protein Pathways: Cell cycle, Oocyte meiosis, p53 signaling pathway, Progesterone-mediated oocyte maturation

Product images:



Western blot analysis of extracts from HeLa (lane 1) and NIH/3T3 (lane 2) cells, using anti-Cyclin B1, V152.