

Product datasheet for **TA328037**

DUSP16 Rabbit Polyclonal Antibody [Clone ID: Poly6224]

Product data:

Product Type:	Primary Antibodies
Clone Name:	Poly6224
Applications:	IHC, WB
Recommended Dilution:	WB, IHC
Reactivity:	Mouse, Rat, Human
Host:	Rabbit
Isotype:	IgG
Clonality:	Polyclonal
Immunogen:	peptide-KLH, C terminal
Formulation:	This antibody is provided in phosphate-buffered solution, pH 7.2, containing 0.09% sodium azide, 0.2% BSA (US Origin) and 50% glycerol.
Purification:	The antibody was purified by antigen-affinity chromatography.
Conjugation:	Unconjugated
Storage:	Store at -20°C as received.
Stability:	Stable for 12 months from date of receipt.
Predicted Protein Size:	38 kD
Gene Name:	dual specificity phosphatase 16
Database Link:	NP_085143 Entrez Gene 70686 Mouse Entrez Gene 297682 Rat Entrez Gene 80824 Human Q9BY84
Background:	p38 mitogen-activated protein kinase (MAPK) is a member of the stress activated kinase family with a molecular weight of 38 kD. MAPK can be activated by a number of stimuli including heat, changes in osmolarity, irradiation, and cold. The MAPKs require dual phosphorylation (threonine and tyrosine) for enzymatic activation. The p38 MAP kinase is required for G2 cell cycle delay after UV irradiation, also participates in cytokine production (IL-6 and erythropoietin). The Poly6224 antibody recognizes human, mouse, and rat p38 MAPK and has been shown to be useful for Western blotting.
Synonyms:	MKP-7; MKP7

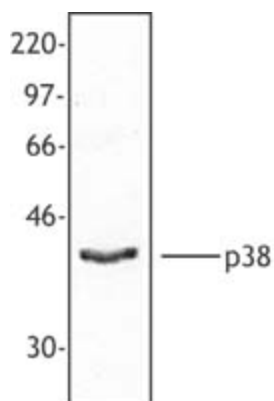


[View online »](#)

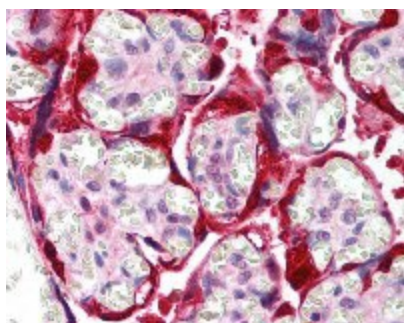
Protein Families: Druggable Genome, Phosphatase

Protein Pathways: MAPK signaling pathway

Product images:



HeLa cell extract was resolved by electrophoresis, transferred to nitrocellulose, and probed with rabbit anti-p38 MAPK antibody. Proteins were visualized using a donkey anti-rabbit secondary conjugated to HRP and a chemiluminescence detection system.



Formalin-fixed paraffin-embedded human placenta tissue was stained with Poly6224 and developed with an alkaline phosphatase chromogen substrate (red color). Tissue was counterstained with H&E (blue/pink). Magnification, 40X.