

Product datasheet for **TA327965**

TIMP1 Mouse Monoclonal Antibody [Clone ID: F31P2A5]

Product data:

Product Type:	Primary Antibodies
Clone Name:	F31P2A5
Applications:	WB
Recommended Dilution:	WB, IHC, ELISA
Reactivity:	Human, Monkey
Host:	Mouse
Isotype:	IgG1, kappa
Clonality:	Monoclonal
Immunogen:	Ovalbumin-conjugated synthetic Peptide FQALGDAADIR
Formulation:	This antibody is provided in phosphate-buffered solution, pH 7.2, containing 0.09% sodium azide at 0.5 mg/ml.
Concentration:	lot specific
Purification:	The antibody was purified by affinity chromatography.
Conjugation:	Unconjugated
Storage:	Store at -20°C as received.
Stability:	Stable for 12 months from date of receipt.
Predicted Protein Size:	23 kD
Gene Name:	TIMP metalloproteinase inhibitor 1
Database Link:	NP_003245 Entrez Gene 574348 Monkey Entrez Gene 7076 Human P01033



[View online »](#)

Background:

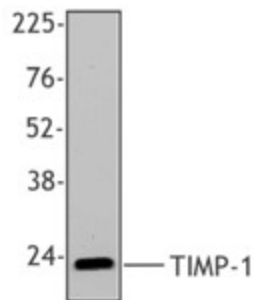
TIMP-1 (Tissue inhibitor of metalloproteinase 1) is a glycoprotein that belongs to the protease inhibitor I35 (TIMP) family. Contains 1 NTR domain, predicted molecular weight 23 kD. TIMP-1 forms complexes with matrix metalloproteinases (MMPs) and inhibits the proteolytic activity of these enzymes. High levels TIMP-1 protein has been found in several types of cancers including breast cancer and this increase associated with a poor patient prognosis. TIMP-1 has also been implicated in the inhibition of apoptosis, promotion of growth, and process of angiogenesis. TIMP-1 may be useful as a prognostic marker in combination with urokinase plasminogen activator (uPA) and plasminogen activator inhibitor type-1 (PAI-1). Clone F31P2A5 has been shown to be useful for western blotting, immunohistochemistry and ELISA of human and monkey TIMP-1.

Synonyms:

CLGI; EPA; EPO; HCI; TIMP; TIMP-1

Protein Families:

Druggable Genome, Secreted Protein

Product images:

Western blot analysis of recombinant human TIMP-1 protein using anti-TIMP-1, clone F31P2A5.