

Product datasheet for **TA327961**

SSRP1 Mouse Monoclonal Antibody [Clone ID: 10D1]

Product data:

Product Type:	Primary Antibodies
Clone Name:	10D1
Applications:	WB
Recommended Dilution:	WB, ChIP, IP, IF
Reactivity:	Human
Host:	Mouse
Isotype:	IgG2b, kappa
Clonality:	Monoclonal
Immunogen:	Recombinant (partial) (308-524aa)
Formulation:	This antibody is provided in phosphate-buffered solution, pH 7.2, containing 0.09% sodium azide at 0.5 mg/ml.
Concentration:	lot specific
Purification:	The antibody was purified by affinity chromatography.
Conjugation:	Unconjugated
Storage:	Store at -20°C as received.
Stability:	Stable for 12 months from date of receipt.
Predicted Protein Size:	81 kD
Gene Name:	structure specific recognition protein 1
Database Link:	NP_003137 Entrez Gene 6749 Human Q08945
Background:	SSRP1 is a nuclear protein and a component of the FACT complex (facilitates chromatin transcription). The FACT complex is composed of the SUPT16H (FACT140) and the SSRP1 FACTp80 proteins. This complex interacts with nucleosomes and histone H2A/H2B dimers to promote nucleosome disassembly and allow transcription elongation. This protein interacts with dsDNA. The SSRP1 protein has been shown to be modified by cisplatin and may protect DNA from repair and block DNA replication. The 10D1 monoclonal antibody recognizes the human SSRP1 protein and has been shown to be useful for Western blotting.

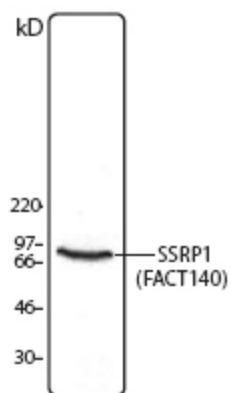


[View online »](#)

Synonyms: FACT; FACT80; T160

Protein Families: Transcription Factors

Product images:



HeLa cell lysate was resolved by electrophoresis, transferred to nitrocellulose, and probed with monoclonal anti-SSRP1 antibody. Proteins were detected using a goat anti-mouse Ig secondary conjugated to HRP and a chemiluminescence detection system.