

## Product datasheet for **TA327948**

### **MUM1 (IRF4) Rat Monoclonal Antibody [Clone ID: IRF4.3E4]**

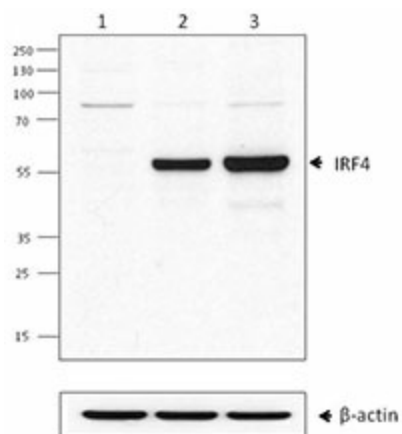
#### **Product data:**

Product Type:	Primary Antibodies
Clone Name:	IRF4.3E4
Applications:	WB
Recommended Dilution:	WB, ICFC
Reactivity:	Mouse, Human
Host:	Rat
Isotype:	IgG1, kappa
Clonality:	Monoclonal
Immunogen:	GST fusion protein containing C-terminal of murine IRF4
Formulation:	Phosphate-buffered solution, pH 7.2, containing 0.09% sodium azide.
Concentration:	lot specific
Purification:	The antibody was purified by affinity chromatography.
Conjugation:	Unconjugated
Storage:	Store at -20°C as received.
Stability:	Stable for 12 months from date of receipt.
Predicted Protein Size:	51 kD
Gene Name:	interferon regulatory factor 4
Database Link:	<a href="#">NP_002451</a> <a href="#">Entrez Gene 16364 Mouse</a> <a href="#">Entrez Gene 3662 Human</a> <a href="#">Q15306</a>
Background:	The IRF family consists of at least nine members. IRF4 and IRF8 are highly homologous to each other and also redundant in function. IRF4 is critical for Th2 and Th17 development. Together with TRF8, it plays an essential role in macrophage and dendritic cell development and function. IRF4 is also reported to be essential for pre-B cell development, receptor editing, germinal center reactor and plasma cell differentiation.
Synonyms:	LSIRF; MUM1; NF-EM5; SHEP8
Protein Families:	Druggable Genome, Transcription Factors



[View online »](#)

## Product images:



Western blot analysis of Daudi (lane 1), Raji (lane 2) and A20 (lane 3) cells using IRF4 antibody (clone IRF4.3E4).  $\beta$ -actin antibody (poly6221) was used as loading control.