

## Product datasheet for **TA327947**

### MMP3 Mouse Monoclonal Antibody [Clone ID: F36P1B4]

#### Product data:

Product Type:	Primary Antibodies
Clone Name:	F36P1B4
Applications:	WB
Recommended Dilution:	WB, IHC, ELISA
Reactivity:	Human
Host:	Mouse
Isotype:	IgG1, kappa
Clonality:	Monoclonal
Immunogen:	Ovalbumin-conjugated synthetic peptide CKSLRKLEPELH
Formulation:	This antibody is provided in phosphate-buffered solution, pH 7.2, containing 0.09% sodium azide at 0.5 mg/ml.
Concentration:	lot specific
Purification:	The antibody was purified by affinity chromatography.
Conjugation:	Unconjugated
Storage:	Store at -20°C as received.
Stability:	Stable for 12 months from date of receipt.
Predicted Protein Size:	54 kD
Gene Name:	matrix metalloproteinase 3
Database Link:	<a href="#">NP_002413</a> <a href="#">Entrez Gene 4314 Human</a> <a href="#">P08254</a>



[View online »](#)

**Background:**

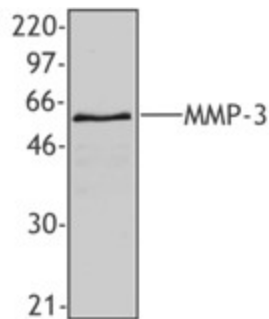
Matrix metalloproteinases (MMPs) are zinc-dependent endopeptidases that degrade substances within the extracellular matrix. The MMP family includes six different groups of enzymes: collagenases, gelatinases, stromelysins, transmembrane MMPs, matrilysins and others. MMPs are secreted as proenzymes that have to be cleaved in order to be activated. Other MMPs, plasmins as well as other factors activate MMPs. MMPs are thought to play an important role in tissue remodeling associated with various physiological and pathological processes. MMP1 cleaves collagens of types I, II, III, VII and X. MMP1 is thought to play an important role in rheumatoid and osteo-arthritis pathogenesis as mediators of cartilage and bone destruction. Clone F15P3B6 has been shown to be useful for western blotting and immunohistochemistry of human MMP1.

**Synonyms:**

CHDS6; MMP-3; SL-1; STMY; STMY1; STR1

**Protein Families:**

Druggable Genome, Protease

**Product images:**

Western blot analysis of recombinant human MMP-3 protein using anti-MMP-3, clone F36P1B4.