

## Product datasheet for **TA327939**

### **gamma Tubulin (TUBG1) Mouse Monoclonal Antibody [Clone ID: 14C11]**

#### **Product data:**

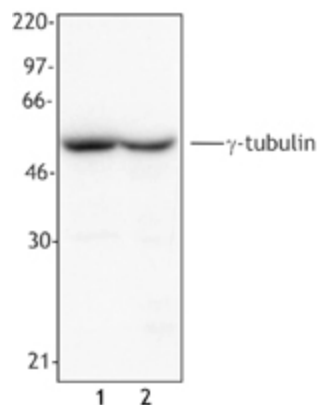
Product Type:	Primary Antibodies
Clone Name:	14C11
Applications:	IF, WB
Recommended Dilution:	WB, IF
Reactivity:	Human, Mouse, Rat
Host:	Mouse
Isotype:	IgG2b, kappa
Clonality:	Monoclonal
Immunogen:	Peptide-KLH
Formulation:	This antibody is provided in phosphate-buffered solution, pH 7.2, containing 0.09% sodium azide at 0.5 mg/ml.
Concentration:	lot specific
Purification:	The antibody was purified by affinity chromatography.
Conjugation:	Unconjugated
Storage:	Store at -20°C as received.
Stability:	Stable for 12 months from date of receipt.
Predicted Protein Size:	51 kD
Gene Name:	tubulin gamma 1
Database Link:	<a href="#">NP_001061</a> <a href="#">Entrez Gene 103733 Mouse</a> <a href="#">Entrez Gene 252921 Rat</a> <a href="#">Entrez Gene 7283 Human</a> <a href="#">P23258</a>
Background:	$\gamma$ -tubulin is a 51 kD member of the tubulin superfamily and is conserved between yeast and mammals. This cytoskeletal protein is highly expressed in centrosomes and is thought to be involved in cytoskeletal organization and mitosis. $\gamma$ -tubulin is expressed at highest levels during prophase to metaphase and can be modified by phosphorylation. This protein has been shown to interact with $\alpha$ -tubulin, paxillin, and RAC GTPase activated protein 1.
Synonyms:	CDCBM4; GCP-1; TUBG; TUBGCP1



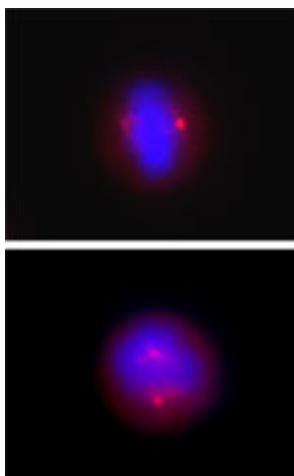
[View online »](#)

Protein Families: Druggable Genome

### Product images:



Cell extract from A431 cells (Lane 1) or NIH3T3 cells (Lane 2) was resolved by electrophoresis, transferred to nitrocellulose and probed with monoclonal anti- $\gamma$ -tubulin (Clone 14C11) antibody. Proteins were visualized using a goat anti-mouse secondary conjugated to HRP and a chemiluminescence detection system.



Overnight nocodazole treated HeLa cells stained with purified mouse monoclonal antibody against  $\gamma$ -Tubulin (clone 14C11) followed by Rhodamine Red-X conjugated donkey anti-mouse IgG and DAPI.