

Product datasheet for **TA327938**

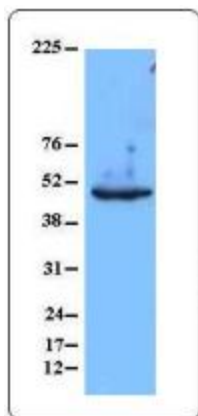
GFAP Mouse Monoclonal Antibody [Clone ID: 2E1.E9]

Product data:

Product Type:	Primary Antibodies
Clone Name:	2E1.E9
Applications:	WB
Recommended Dilution:	WB, FC, IHC
Reactivity:	Human, Mouse, Rat
Host:	Mouse
Isotype:	IgG2b
Clonality:	Monoclonal
Immunogen:	Bovine spinal cord homogenate
Formulation:	Phosphate-buffered solution, pH 7.2, containing 0.09% sodium azide.
Concentration:	lot specific
Purification:	This antibody is at >85% purity.
Conjugation:	Unconjugated
Storage:	Store at -20°C as received.
Stability:	Stable for 12 months from date of receipt.
Predicted Protein Size:	Around 50 kD
Gene Name:	glial fibrillary acidic protein
Database Link:	NP_002046 Entrez Gene 14580 Mouse Entrez Gene 24387 Rat Entrez Gene 2670 Human P14136
Background:	GFAP is expressed exclusively in astrocytes in the central nervous system. The protein is a member of the intermediate filament family of proteins which form networks providing support and strength to cells. This antibody does not cross-react with other intermediate filaments such as vimentin, neurofilament proteins, desmin and others. More than 50 GFAP mutations were identified to associate with Alexander disease.
Synonyms:	ALXDRD
Protein Families:	ES Cell Differentiation/IPS



[View online »](#)

Product images:

Mouse Brain extract cell lysates was resolved by electrophoresis, transferred to nitrocellulose and probed with purified 2E1.E9. Proteins were visualized using a goat anti-mouse secondary antibody conjugated to HRP and a chemiluminescence system.