

Product datasheet for **TA327925**

LAT Mouse Monoclonal Antibody [Clone ID: 11B.12]

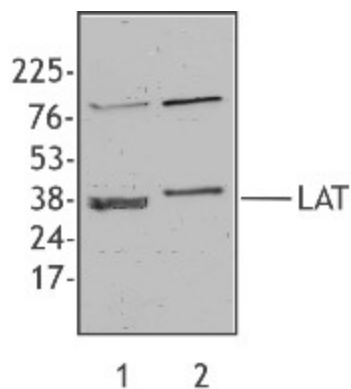
Product data:

Product Type:	Primary Antibodies
Clone Name:	11B.12
Applications:	WB
Recommended Dilution:	WB, IP
Reactivity:	Human, Mouse
Host:	Mouse
Isotype:	IgG1, kappa
Clonality:	Monoclonal
Immunogen:	GST fusion protein corresponding to residues 31-233 of human LAT, cytoplasmic domain
Formulation:	This antibody is provided in phosphate-buffered solution, pH 7.2, containing 0.09% sodium azide. Final antibody concentration is 0.5 mg/ml.
Concentration:	lot specific
Purification:	The antibody was purified by affinity chromatography.
Conjugation:	Unconjugated
Storage:	Store at -20°C as received.
Stability:	Stable for 12 months from date of receipt.
Predicted Protein Size:	28 kD but expected at 36-38 kD
Gene Name:	linker for activation of T-cells
Database Link:	NP_001014987 Entrez Gene 16797 Mouse Entrez Gene 27040 Human O43561
Background:	LAT is a transmembrane molecule that mediates signaling following the engagement of a number of cell surface receptors including TCR during mature T cell activation, pre-TCR during T cell development, Fc RIII on NK cells, and FcεRI on mast cells. LAT is multiply phosphorylated on tyrosines by ZAP-70 and Syk, which leads to downstream effects that include release of intracellular calcium, PKC activation, MAPK activation and cytoskeletal reorganization. Palmitoylation of LAT is required for its localization to lipid rafts and efficient phosphorylation.



[View online »](#)

Synonyms:	LAT1; pp36
Protein Families:	Druggable Genome, Transmembrane
Protein Pathways:	Fc epsilon RI signaling pathway, Fc gamma R-mediated phagocytosis, Natural killer cell mediated cytotoxicity, T cell receptor signaling pathway

Product images:

Western blot analysis of extracts from Jurkat cells (lane 1) and mouse thymocytes (lane 2) using anti-LAT, clone 11B.12.