

## Product datasheet for **TA327922**

### **BCL2 Mouse Monoclonal Antibody [Clone ID: BCL/10C4]**

#### **Product data:**

Product Type:	Primary Antibodies
Clone Name:	BCL/10C4
Applications:	WB
Recommended Dilution:	WB, IP, IF
Reactivity:	Mouse, Rat
Host:	Mouse
Isotype:	IgG1, kappa
Clonality:	Monoclonal
Immunogen:	N-terminal, Amino acid residues 61-76 of mouse Bcl-2
Formulation:	This antibody is provided in phosphate-buffered solution, pH 7.2, containing 0.09% sodium azide at 0.5 mg/ml.
Concentration:	lot specific
Purification:	The antibody was purified by affinity chromatography.
Conjugation:	Unconjugated
Storage:	Store at -20°C as received.
Stability:	Stable for 12 months from date of receipt.
Predicted Protein Size:	25 kD, 22 kD
Gene Name:	B-cell CLL/lymphoma 2
Database Link:	<a href="#">NP_000648</a> <a href="#">Entrez Gene 12043 Mouse</a> <a href="#">Entrez Gene 24224 Rat</a> <a href="#">P10415</a>



[View online »](#)

**Background:**

Bcl-2 (B-cell leukemia 2) is an apoptotic protein and a member of the Bcl-2 family containing BH1-4 domains. Two reported isoforms exist  $\alpha=25$  kD;  $\beta=22$  kD. The Bcl-2 protein forms homo- or hetero-dimers with other Bcl-2 family members. Bcl-2 is distributed in the outer mitochondrial membrane, intracellular membrane nuclear envelope, and endoplasmic reticulum. This protein blocks apoptotic death by controlling mitochondrial membrane permeability. Cleavage of Bcl-2 can convert to pro-apoptotic (by cleavage of BH4 domain). Bcl-2 has been reported to regulate cell cycle progression via ROS. This protein is modified by ASK1/JNK1, PKC, ERKs, and stress-activated kinase phosphorylation and can be ubiquitinated. Bcl-2 has been shown to interact with Apaf-1, Raf-1, TP53BP2, caspase-3, and form heterodimers with Bax, Bad, Bak, Bcl-xL, and Bag-1. Bcl-2 is modified by phosphorylation and ubiquitination. Clone BCL/10C4 has been shown to be useful for Western blotting, immunoprecipitation, and immunofluorescence of the mouse and rat Bcl-2 protein.

**Synonyms:**

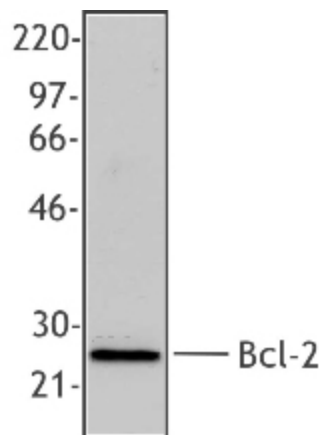
Bcl-2; PPP1R50

**Protein Families:**

Druggable Genome, ES Cell Differentiation/IPS, Stem cell - Pluripotency, Transmembrane

**Protein Pathways:**

Amyotrophic lateral sclerosis (ALS), Apoptosis, Colorectal cancer, Focal adhesion, Neurotrophin signaling pathway, Pathways in cancer, Prostate cancer, Small cell lung cancer

**Product images:**

Western blot analysis of extracts from mouse splenocytes using anti-Bcl-2, clone BCL/10C4.