

Product datasheet for **TA327916S**

Caspase 3 (CASP3) Rabbit Polyclonal Antibody

Product data:

Product Type:	Primary Antibodies
Applications:	WB
Recommended Dilution:	WB: 1:500-1:2000
Reactivity:	Mouse, Rat, Human
Host:	Rabbit
Isotype:	IgG
Clonality:	Polyclonal
Immunogen:	The antiserum was produced against synthesized peptide derived from human Caspase 3.
Formulation:	Rabbit IgG in phosphate buffered saline , pH 7.4, 150mM NaCl, 0.02% sodium azide and 50% glycerol.Store at -20 °C.Stable for 12 months from date of receipt
Concentration:	lot specific
Purification:	The antibody was affinity-purified from rabbit antiserum by affinity-chromatography using epitope-specific peptide.
Conjugation:	Unconjugated
Storage:	Store at -20°C as received.
Stability:	Stable for 12 months from date of receipt.
Predicted Protein Size:	17 kDa
Gene Name:	caspase 3
Database Link:	NP_116786 Entrez Gene 12367 Mouse Entrez Gene 25402 Rat Entrez Gene 836 Human P42574
Background:	This gene encodes a protein which is a member of the cysteine-aspartic acid protease (caspase) family. Sequential activation of caspases plays a central role in the execution-phase of cell apoptosis. Caspases exist as inactive proenzymes which undergo proteolytic processing at conserved aspartic residues to produce 2 subunits, large and small, that dimerize to form the active enzyme.
Synonyms:	CPP32; CPP32B; SCA-1



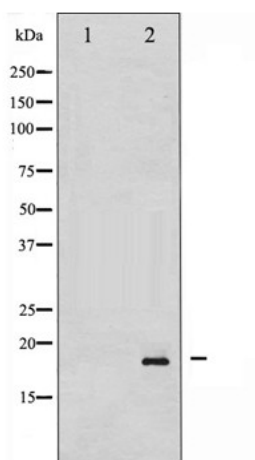
[View online »](#)

Note: Caspase 3 (p17,Cleaved-Asp175) Antibody detects endogenous levels of fragment of activated Caspase 3 resulting from cleavage adjacent to Asp175.

Protein Families: Druggable Genome, ES Cell Differentiation/IPS, Protease

Protein Pathways: Alzheimer's disease, Amyotrophic lateral sclerosis (ALS), Apoptosis, Colorectal cancer, Epithelial cell signaling in Helicobacter pylori infection, Huntington's disease, MAPK signaling pathway, Natural killer cell mediated cytotoxicity, p53 signaling pathway, Parkinson's disease, Pathways in cancer, Viral myocarditis

Product images:



Western blot analysis of extracts from COLO cells, using Cleaved-caspase 3. The lane on the left is treated with the synthesized peptide.