

Product datasheet for **TA327912**

Chk1 (CHEK1) Rabbit Polyclonal Antibody

Product data:

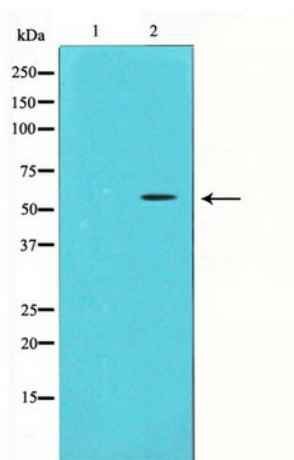
Product Type:	Primary Antibodies
Applications:	WB
Recommended Dilution:	WB: 1:500-1:2000
Reactivity:	Human
Host:	Rabbit
Isotype:	IgG
Clonality:	Polyclonal
Immunogen:	A synthesized peptide derived from human Chk1
Formulation:	Rabbit IgG in phosphate buffered saline , pH 7.4, 150mM NaCl, 0.02% sodium azide and 50% glycerol.Store at -20 °C.
Concentration:	lot specific
Purification:	The antibody was affinity-purified from rabbit antiserum by affinity-chromatography using epitope-specific peptide.
Conjugation:	Unconjugated
Storage:	Store at -20°C as received.
Stability:	Stable for 12 months from date of receipt.
Predicted Protein Size:	56 kDa
Gene Name:	checkpoint kinase 1
Database Link:	NP_001265 Entrez Gene 1111 Human O14757
Background:	DNA damage induced protein phosphorylation; regulation of mitotic centrosome separation; regulation of S phase; peptidyl-threonine phosphorylation; DNA repair; chromatin-mediated maintenance of transcription; negative regulation of mitosis;
Synonyms:	CHK1
Note:	Chk1 Antibody detects endogenous levels of total Chk1
Protein Families:	Druggable Genome, Protein Kinase, Stem cell - Pluripotency



[View online »](#)

Protein Pathways: Cell cycle, p53 signaling pathway

Product images:



Western blot analysis of Chk1 expression in HeLa whole cell lysates, The lane on the left is treated with the antigen-specific peptide