

## Product datasheet for **TA327911**

### PLCG 2 (PLCG2) Rabbit Polyclonal Antibody

#### Product data:

Product Type:	Primary Antibodies
Applications:	WB
Recommended Dilution:	WB: 1:500-1:2000, IHC: 1:50-1:200
Reactivity:	Human, Mouse, Rat
Modifications:	Phospho-specific
Host:	Rabbit
Isotype:	IgG
Clonality:	Polyclonal
Immunogen:	A synthesized peptide derived from human PLCG2 around the phosphorylation site of Tyrosine 753.
Formulation:	Rabbit IgG in phosphate buffered saline , pH 7.4, 150mM NaCl, 0.02% sodium azide and 50% glycerol.Store at -20 °C.Stable for 12 months from date of receipt
Concentration:	lot specific
Purification:	The antibody was affinity-purified from rabbit antiserum by affinity-chromatography using epitope-specific peptide.
Conjugation:	Unconjugated
Storage:	Store at -20°C as received.
Stability:	Stable for 12 months from date of receipt.
Predicted Protein Size:	150 kDa
Gene Name:	phospholipase C gamma 2
Database Link:	<a href="#">NP_002652</a> <a href="#">Entrez Gene 29337 Rat</a> <a href="#">Entrez Gene 234779 Mouse</a> <a href="#">Entrez Gene 5336 Human</a> <a href="#">P16885</a>
Background:	Enzymes of the phospholipase C family catalyze the hydrolysis of phospholipids to yield diacylglycerols and water-soluble phosphorylated derivatives of the lipid head groups. A number of these enzymes have specificity for phosphoinositides.
Synonyms:	APLAID; FCAS3; PLC-gamma-2; PLC-IV



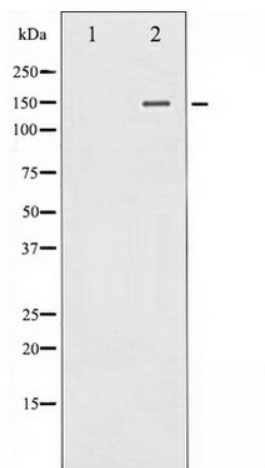
[View online »](#)

**Note:** Phospho-PLCG2 (Tyr753) Antibody detects endogenous levels of PLCG2 only when phosphorylated at Tyrosine 753.

**Protein Families:** Druggable Genome

**Protein Pathways:** B cell receptor signaling pathway, Calcium signaling pathway, Epithelial cell signaling in Helicobacter pylori infection, ErbB signaling pathway, Fc epsilon RI signaling pathway, Fc gamma R-mediated phagocytosis, Glioma, Inositol phosphate metabolism, Leukocyte transendothelial migration, Metabolic pathways, Natural killer cell mediated cytotoxicity, Neurotrophin signaling pathway, Non-small cell lung cancer, Pathways in cancer, Phosphatidylinositol signaling system, VEGF signaling pathway, Vibrio cholerae infection

### Product images:



Western blot analysis of PLCG2 phosphorylation expression in HepG2 whole cell lysates, The lane on the left is treated with the antigen-specific peptide.