

Product datasheet for **TA327901**

alpha Tubulin (TUBA1A) Rabbit Polyclonal Antibody

Product data:

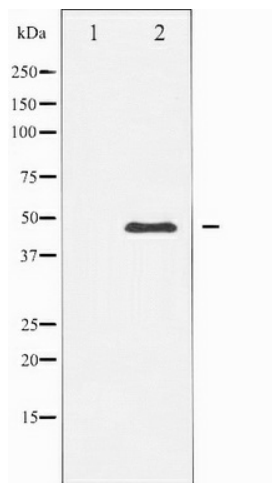
Product Type:	Primary Antibodies
Applications:	WB
Recommended Dilution:	WB: 1:500-1:2000; IHC: 1:50-1:200; IF/ICC: 1:100-1:500
Reactivity:	Human, Mouse, Rat
Host:	Rabbit
Isotype:	IgG
Clonality:	Polyclonal
Immunogen:	The antiserum was produced against A synthesized peptide derived from human Tubulin alpha
Formulation:	Rabbit IgG in phosphate buffered saline , pH 7.4, 150mM NaCl, 0.02% sodium azide and 50% glycerol.
Concentration:	lot specific
Purification:	The antibody was affinity-purified from rabbit antiserum by affinity-chromatography using epitope-specific peptide.
Conjugation:	Unconjugated
Storage:	Store at -20°C as received.
Stability:	Stable for 12 months from date of receipt.
Predicted Protein Size:	50 kDa
Gene Name:	tubulin alpha 1a
Database Link:	NP_006000 Entrez Gene 22142 Mouse Entrez Gene 64158 Rat Entrez Gene 7846 Human Q71U36
Background:	TUBA1B Tubulin is the major constituent of microtubules. It binds two moles of GTP, one at an exchangeable site on the beta chain and one at a non-exchangeable site on the alpha-chain. Dimer of alpha and beta chains. Belongs to the tubulin family
Synonyms:	B-ALPHA-1; LIS3; TUBA3
Protein Families:	Druggable Genome



[View online »](#)

Protein Pathways: Gap junction, Pathogenic Escherichia coli infection

Product images:



Western blot analysis of Tubulin alpha expression in NIH-3T3 whole cell lysates, The lane on the left is treated with the antigen-specific peptide.