

Product datasheet for **TA327896**

Estrogen Receptor beta (ESR2) Rabbit Polyclonal Antibody

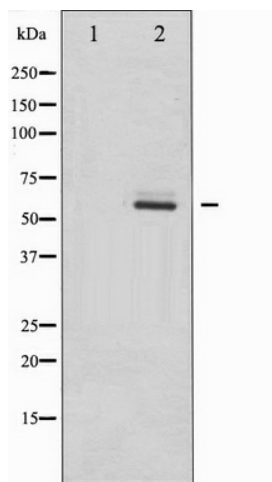
Product data:

Product Type:	Primary Antibodies
Applications:	WB
Recommended Dilution:	WB: 1:500-1:2000; IF/ICC: 1:100-1:500
Reactivity:	Human, Mouse, Rat
Host:	Rabbit
Isotype:	IgG
Clonality:	Polyclonal
Immunogen:	The antiserum was produced against A synthesized peptide derived from human Estrogen Receptor-beta
Formulation:	Rabbit IgG in phosphate buffered saline , pH 7.4, 150mM NaCl, 0.02% sodium azide and 50% glycerol.
Concentration:	lot specific
Purification:	The antibody was affinity-purified from rabbit antiserum by affinity-chromatography using epitope-specific peptide.
Conjugation:	Unconjugated
Storage:	Store at -20°C as received.
Stability:	Stable for 12 months from date of receipt.
Predicted Protein Size:	59 kDa
Gene Name:	estrogen receptor 2
Database Link:	NP_001428 Entrez Gene 13983 Mouse Entrez Gene 25149 Rat Entrez Gene 2100 Human Q92731
Background:	Estrogen receptor-beta (ESR2) is a member of the superfamily of nuclear receptors, which can transduce extracellular signals into transcriptional responses.
Synonyms:	ER-BETA; Erb; ESR-BETA; ESRB; ESTRB; NR3A2
Protein Families:	Druggable Genome, Nuclear Hormone Receptor, Transcription Factors



[View online »](#)

Product images:



Western blot analysis of Estrogen Receptor-beta expression in EGF treated HeLa whole cell lysates, The lane on the left is treated with the antigen-specific peptide.