

## Product datasheet for **TA327883**

### PKC delta (PRKCD) Rabbit Polyclonal Antibody

#### Product data:

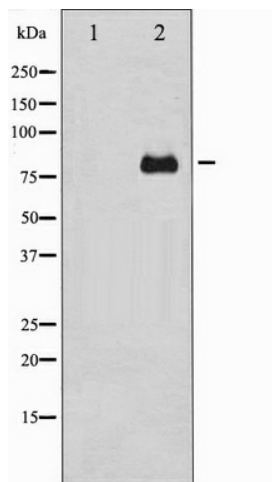
Product Type:	Primary Antibodies
Applications:	WB
Recommended Dilution:	WB: 1:500-1:2000
Reactivity:	Human, Mouse, Rat
Host:	Rabbit
Isotype:	IgG
Clonality:	Polyclonal
Immunogen:	The antiserum was produced against A synthesized peptide derived from human PKC delta
Formulation:	Rabbit IgG in phosphate buffered saline , pH 7.4, 150mM NaCl, 0.02% sodium azide and 50% glycerol.
Concentration:	lot specific
Purification:	The antibody was affinity-purified from rabbit antiserum by affinity-chromatography using epitope-specific peptide.
Conjugation:	Unconjugated
Storage:	Store at -20°C as received.
Stability:	Stable for 12 months from date of receipt.
Predicted Protein Size:	77 kDa
Gene Name:	protein kinase C delta
Database Link:	<a href="#">NP_006245</a> <a href="#">Entrez Gene 18753 Mouse</a> <a href="#">Entrez Gene 170538 Rat</a> <a href="#">Entrez Gene 5580 Human</a> <a href="#">Q05655</a>
Background:	Protein kinase C (PKC) is a family of serine- and threonine-specific protein kinases that can be activated by calcium and the second messenger diacylglycerol. PKC family members phosphorylate a wide variety of protein targets and are known to be involved
Synonyms:	ALPS3; CVID9; MAY1; nPKC-delta; PKCD
Protein Families:	Druggable Genome, Protein Kinase



[View online »](#)

**Protein Pathways:**

Chemokine signaling pathway, Fc epsilon RI signaling pathway, Fc gamma R-mediated phagocytosis, GnRH signaling pathway, Neurotrophin signaling pathway, Tight junction, Type II diabetes mellitus, Vascular smooth muscle contraction

**Product images:**

Western blot analysis of PKC delta expression in HeLa whole cell lysates, The lane on the left is treated with the antigen-specific peptide.