

## Product datasheet for **TA327881**

### NMDAR1 (GRIN1) Rabbit Polyclonal Antibody

#### Product data:

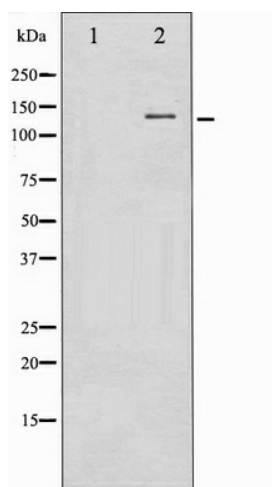
Product Type:	Primary Antibodies
Applications:	WB
Recommended Dilution:	WB: 1:500-1:2000; IHC: 1:50-1:200
Reactivity:	Human, Mouse, Rat
Host:	Rabbit
Isotype:	IgG
Clonality:	Polyclonal
Immunogen:	The antiserum was produced against A synthesized peptide derived from human NMDAR1
Formulation:	Rabbit IgG in phosphate buffered saline , pH 7.4, 150mM NaCl, 0.02% sodium azide and 50% glycerol.
Concentration:	lot specific
Purification:	The antibody was affinity-purified from rabbit antiserum by affinity-chromatography using epitope-specific peptide.
Conjugation:	Unconjugated
Storage:	Store at -20°C as received.
Stability:	Stable for 12 months from date of receipt.
Predicted Protein Size:	120 kDa
Gene Name:	glutamate ionotropic receptor NMDA type subunit 1
Database Link:	<a href="#">NP_000823</a> <a href="#">Entrez Gene 14810 Mouse</a> <a href="#">Entrez Gene 24408 Rat</a> <a href="#">Entrez Gene 2902 Human</a> <a href="#">Q05586</a>
Background:	The protein encoded by this gene is a critical subunit of N-methyl-D-aspartate receptors, members of the glutamate receptor channel superfamily which are heteromeric protein complexes with multiple subunits arranged to form a ligand-gated ion channel. The
Synonyms:	GluN1; MRD8; NMD-R1; NMDA1; NMDAR1; NR1
Protein Families:	Druggable Genome, Ion Channels: Glutamate Receptors, Transmembrane



[View online »](#)

**Protein Pathways:** Alzheimer's disease, Amyotrophic lateral sclerosis (ALS), Calcium signaling pathway, Huntington's disease, Long-term potentiation, Neuroactive ligand-receptor interaction

**Product images:**



Western blot analysis of NMDAR1 expression in Jurkat whole cell lysates, The lane on the left is treated with the antigen-specific peptide.