

## Product datasheet for **TA327831**

### ErbB 4 (ERBB4) Rabbit Polyclonal Antibody

#### Product data:

Product Type:	Primary Antibodies
Applications:	WB
Recommended Dilution:	WB: 1:500-1:2000; IHC: 1:50-1:200; IF/ICC: 1:100-1:500
Reactivity:	Human, Mouse, Rat
Modifications:	Phospho-specific
Host:	Rabbit
Isotype:	IgG
Clonality:	Polyclonal
Immunogen:	The antiserum was produced against A synthesized peptide derived from human HER4 around the phosphorylation site of Tyrosine 1284
Formulation:	Rabbit IgG in phosphate buffered saline , pH 7.4, 150mM NaCl, 0.02% sodium azide and 50% glycerol.
Concentration:	lot specific
Purification:	The antibody was affinity-purified from rabbit antiserum by affinity-chromatography using epitope-specific peptide.
Conjugation:	Unconjugated
Storage:	Store at -20°C as received.
Stability:	Stable for 12 months from date of receipt.
Predicted Protein Size:	180 kDa
Gene Name:	erb-b2 receptor tyrosine kinase 4
Database Link:	<a href="#">NP_005226</a> <a href="#">Entrez Gene 13869 MouseEntrez Gene 59323 RatEntrez Gene 2066 Human Q15303</a>
Background:	The HER4/ERBB4 gene is a member of the type I receptor tyrosine kinase subfamily that includes EGFR (MIM 131550), ERBB2 (MIM 164870), and ERBB3 (MIM 190151). It encodes a receptor for NDF/hereregulin (MIM 142445).
Synonyms:	ALS19; HER4; p180erbB4

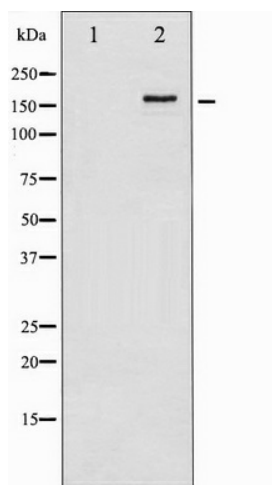


[View online »](#)

**Protein Families:** Druggable Genome, Protein Kinase, Transmembrane

**Protein Pathways:** Calcium signaling pathway, Endocytosis, ErbB signaling pathway

**Product images:**



Western blot analysis of HER4 phosphorylation expression in EGF treated HuvEc whole cell lysates, The lane on the left is treated with the antigen-specific peptide.