

Product datasheet for **TA327830**

PKC mu (PRKD1) Rabbit Polyclonal Antibody

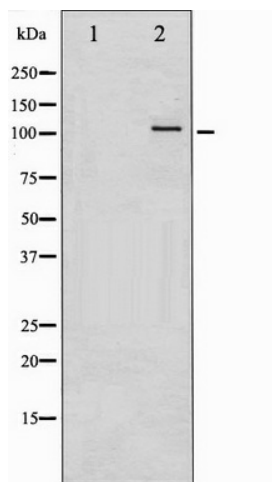
Product data:

Product Type:	Primary Antibodies
Applications:	WB
Recommended Dilution:	WB: 1:500-1:2000; IHC: 1:50-1:200
Reactivity:	Human, Mouse, Rat
Modifications:	Phospho-specific
Host:	Rabbit
Isotype:	IgG
Clonality:	Polyclonal
Immunogen:	The antiserum was produced against A synthesized peptide derived from human PKD1/2/3/PKC μ around the phosphorylation site of Serine 738+Serine 742
Formulation:	Rabbit IgG in phosphate buffered saline , pH 7.4, 150mM NaCl, 0.02% sodium azide and 50% glycerol.
Concentration:	lot specific
Purification:	The antibody was affinity-purified from rabbit antiserum by affinity-chromatography using epitope-specific peptide.
Conjugation:	Unconjugated
Storage:	Store at -20°C as received.
Stability:	Stable for 12 months from date of receipt.
Predicted Protein Size:	101 kDa
Gene Name:	protein kinase D1
Database Link:	NP_002733 Entrez Gene 18760 MouseEntrez Gene 85421 RatEntrez Gene 5587 Human Q15139
Background:	PKD3 a CAMK kinase of the PKD family. An important component of signaling pathways downstream from novel PKC enzymes after B-cell receptor engagement.
Synonyms:	PKC-MU; PKCM; PKD; PRKCM
Protein Families:	Druggable Genome, Protein Kinase



[View online »](#)

Product images:



Western blot analysis of PKD1/2/3/PKC μ phosphorylation expression in PMA treated A549 whole cell lysates, The lane on the left is treated with the antigen-specific peptide.