

## Product datasheet for **TA327826**

### **SHP2 (PTPN11) Rabbit Polyclonal Antibody**

#### **Product data:**

|                                |   |
|--------------------------------|---|
| <b>Product Type:</b>           | Primary Antibodies  |
| <b>Applications:</b>           | WB  |
| <b>Recommended Dilution:</b>   | WB: 1:500-1:2000; IHC: 1:50-1:200   |
| <b>Reactivity:</b>             | Human, Mouse, Rat   |
| <b>Modifications:</b>          | Phospho-specific  |
| <b>Host:</b>                   | Rabbit  |
| <b>Isotype:</b>                | IgG   |
| <b>Clonality:</b>              | Polyclonal  |
| <b>Immunogen:</b>              | The antiserum was produced against A synthesized peptide derived from human SHP-2 around the phosphorylation site of Tyrosine 542   |
| <b>Formulation:</b>            | Rabbit IgG in phosphate buffered saline , pH 7.4, 150mM NaCl, 0.02% sodium azide and 50% glycerol.  |
| <b>Concentration:</b>          | lot specific  |
| <b>Purification:</b>           | The antibody was affinity-purified from rabbit antiserum by affinity-chromatography using epitope-specific peptide.   |
| <b>Conjugation:</b>            | Unconjugated  |
| <b>Storage:</b>                | Store at -20°C as received.   |
| <b>Stability:</b>              | Stable for 12 months from date of receipt.  |
| <b>Predicted Protein Size:</b> | 70 kDa  |
| <b>Gene Name:</b>              | protein tyrosine phosphatase, non-receptor type 11  |
| <b>Database Link:</b>          | <a href="#">NP_002825</a><br><a href="#">Entrez Gene 19247 MouseEntrez Gene 25622 RatEntrez Gene 5781 Human Q06124</a>  |
| <b>Background:</b>             | SHP-2 a SH2-containing a ubiquitously expressed tyrosine-specific protein phosphatase. It participates in signaling events downstream of receptors for growth factors, cytokines, hormones, antigens and extracellular matrices in the control of cell growth |
| <b>Synonyms:</b>               | BPTP3; CFC; JMML; METCD5; NS1; PTP-1D; PTP2C; SH-PTP2; SH-PTP3; SHP2  |

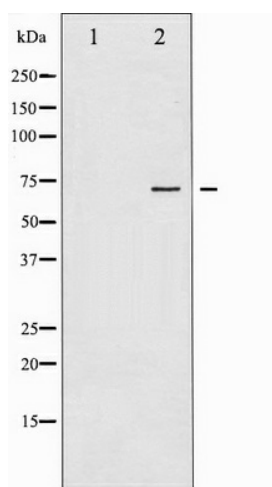


[View online »](#)

**Protein Families:** Druggable Genome, Phosphatase

**Protein Pathways:** Adipocytokine signaling pathway, Chronic myeloid leukemia, Epithelial cell signaling in Helicobacter pylori infection, Jak-STAT signaling pathway, Leukocyte transendothelial migration, Natural killer cell mediated cytotoxicity, Neurotrophin signaling pathway, Renal cell carcinoma

**Product images:**



Western blot analysis of SHP-2 phosphorylation expression in A431 whole cell lysates, The lane on the left is treated with the antigen-specific peptide.