

## Product datasheet for **TA327820**

### FAK (PTK2) Rabbit Polyclonal Antibody

#### Product data:

Product Type:	Primary Antibodies
Applications:	WB
Recommended Dilution:	WB: 1:500-1:2000
Reactivity:	Human, Mouse, Rat
Modifications:	Phospho-specific
Host:	Rabbit
Isotype:	IgG
Clonality:	Polyclonal
Immunogen:	The antiserum was produced against A synthesized peptide derived from human FAK around the phosphorylation site of Serine 843
Formulation:	Rabbit IgG in phosphate buffered saline , pH 7.4, 150mM NaCl, 0.02% sodium azide and 50% glycerol.
Concentration:	lot specific
Purification:	The antibody was affinity-purified from rabbit antiserum by affinity-chromatography using epitope-specific peptide.
Conjugation:	Unconjugated
Storage:	Store at -20°C as received.
Stability:	Stable for 12 months from date of receipt.
Predicted Protein Size:	120 kDa
Gene Name:	protein tyrosine kinase 2
Database Link:	<a href="#">NP_722560</a> <a href="#">Entrez Gene 14083 Mouse</a> <a href="#">Entrez Gene 25614 Rat</a> <a href="#">Entrez Gene 5747 Human</a> <a href="#">Q05397</a>
Background:	This gene encodes a cytoplasmic protein tyrosine kinase which is found concentrated in the focal adhesions that form between cells growing in the presence of extracellular matrix constituents.
Synonyms:	FADK; FAK; FAK1; FRNK; p125FAK; pp125FAK; PPP1R71

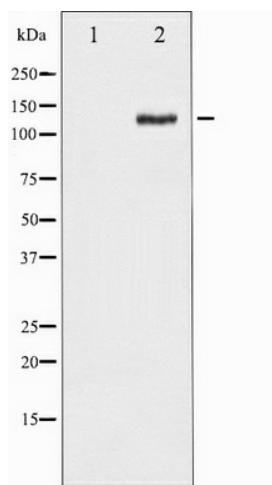


[View online »](#)

**Protein Families:** Druggable Genome, Protein Kinase

**Protein Pathways:** Axon guidance, Chemokine signaling pathway, ErbB signaling pathway, Focal adhesion, Leukocyte transendothelial migration, Pathways in cancer, Regulation of actin cytoskeleton, Small cell lung cancer, VEGF signaling pathway

**Product images:**



Western blot analysis of FAK phosphorylation expression in PMA treated HepG2 whole cell lysates, The lane on the left is treated with the antigen-specific peptide.