

Product datasheet for **TA327812**

PTEN Rabbit Polyclonal Antibody

Product data:

Product Type:	Primary Antibodies
Applications:	WB
Recommended Dilution:	WB: 1:500-1:2000; IHC: 1:50-1:200
Reactivity:	Human, Mouse, Rat
Modifications:	Phospho-specific
Host:	Rabbit
Isotype:	IgG
Clonality:	Polyclonal
Immunogen:	The antiserum was produced against A synthesized peptide derived from human PTEN around the phosphorylation site of Serine 370
Formulation:	Rabbit IgG in phosphate buffered saline , pH 7.4, 150mM NaCl, 0.02% sodium azide and 50% glycerol.
Concentration:	lot specific
Purification:	The antibody was affinity-purified from rabbit antiserum by affinity-chromatography using epitope-specific peptide.
Conjugation:	Unconjugated
Storage:	Store at -20°C as received.
Stability:	Stable for 12 months from date of receipt.
Predicted Protein Size:	54 kDa
Gene Name:	phosphatase and tensin homolog
Database Link:	NP_000305 Entrez Gene 19211 Mouse Entrez Gene 50557 Rat Entrez Gene 5728 Human P60484
Background:	PTEN a phosphoinositide 3-phosphatase (PIP3) and a tumor suppressor implicated in a wide variety of human cancers. Dephosphorylates inositol phospholipids generated by the activation of the phosphoinositide 3 kinase (PI3K).
Synonyms:	10q23del; BZS; CWS1; DEC; GLM2; MHAM; MMAC1; PTEN1; TEP1

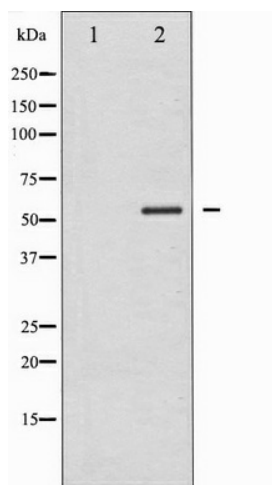


[View online »](#)

Protein Families: Druggable Genome, Phosphatase

Protein Pathways: Endometrial cancer, Focal adhesion, Glioma, Inositol phosphate metabolism, Melanoma, p53 signaling pathway, Pathways in cancer, Phosphatidylinositol signaling system, Prostate cancer, Small cell lung cancer, Tight junction

Product images:



Western blot analysis of PTEN phosphorylation expression in Vanadate treated HeLa whole cell lysates, The lane on the left is treated with the antigen-specific peptide.