

Product datasheet for **TA327802**

SHP1 (PTPN6) Rabbit Polyclonal Antibody

Product data:

Product Type:	Primary Antibodies
Applications:	WB
Recommended Dilution:	WB: 1:500-1:2000; IHC: 1:50-1:200
Reactivity:	Human, Mouse, Rat
Modifications:	Phospho-specific
Host:	Rabbit
Isotype:	IgG
Clonality:	Polyclonal
Immunogen:	The antiserum was produced against A synthesized peptide derived from human SHP-1 around the phosphorylation site of Tyrosine 536
Formulation:	Rabbit IgG in phosphate buffered saline , pH 7.4, 150mM NaCl, 0.02% sodium azide and 50% glycerol.
Concentration:	lot specific
Purification:	The antibody was affinity-purified from rabbit antiserum by affinity-chromatography using epitope-specific peptide.
Conjugation:	Unconjugated
Storage:	Store at -20°C as received.
Stability:	Stable for 12 months from date of receipt.
Predicted Protein Size:	67 kDa
Gene Name:	protein tyrosine phosphatase, non-receptor type 6
Database Link:	NP_536858 Entrez Gene 15170 MouseEntrez Gene 116689 RatEntrez Gene 5777 Human P29350
Background:	The protein encoded by this gene is a member of the protein tyrosine phosphatase (PTP) family. PTPs are known to be signaling molecules that regulate a variety of cellular processes including cell growth, differentiation, mitotic cycle, and oncogenic tran
Synonyms:	HCP; HCPH; HPTP1C; PTP-1C; SH-PTP1; SHP-1; SHP-1L; SHP1

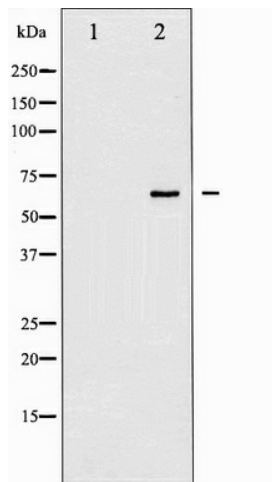


[View online »](#)

Protein Families: Druggable Genome, Phosphatase, Stem cell - Pluripotency

Protein Pathways: Adherens junction, B cell receptor signaling pathway, Jak-STAT signaling pathway, Natural killer cell mediated cytotoxicity, T cell receptor signaling pathway

Product images:



Western blot analysis of SHP-1 phosphorylation expression in EGF treated RAW264.7 whole cell lysates, The lane on the left is treated with the antigen-specific peptide.