

Product datasheet for **TA327798**

PTP1B (PTPN1) Rabbit Polyclonal Antibody

Product data:

Product Type:	Primary Antibodies
Applications:	WB
Recommended Dilution:	WB: 1:500-1:2000; IHC: 1:50-1:200
Reactivity:	Human, Mouse, Rat
Modifications:	Phospho-specific
Host:	Rabbit
Isotype:	IgG
Clonality:	Polyclonal
Immunogen:	The antiserum was produced against A synthesized peptide derived from human PTP1B around the phosphorylation site of Serine 50
Formulation:	Rabbit IgG in phosphate buffered saline , pH 7.4, 150mM NaCl, 0.02% sodium azide and 50% glycerol.
Concentration:	lot specific
Purification:	The antibody was affinity-purified from rabbit antiserum by affinity-chromatography using epitope-specific peptide.
Conjugation:	Unconjugated
Storage:	Store at -20°C as received.
Stability:	Stable for 12 months from date of receipt.
Predicted Protein Size:	49 kDa
Gene Name:	protein tyrosine phosphatase, non-receptor type 1
Database Link:	NP_002818 Entrez Gene 19246 MouseEntrez Gene 24697 RatEntrez Gene 5770 Human P18031
Background:	The protein encoded by this gene is the founding member of the protein tyrosine phosphatase (PTP) family, which was isolated and identified based on its enzymatic activity and amino acid sequence. PTPs catalyze the hydrolysis of the phosphate monoesters s
Synonyms:	PTP1B

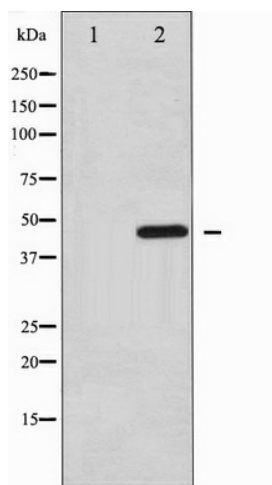


[View online »](#)

Protein Families: Druggable Genome, Phosphatase, Transmembrane

Protein Pathways: Adherens junction, Insulin signaling pathway

Product images:



Western blot analysis of PTP1B phosphorylation expression in UV treated COS7 whole cell lysates, The lane on the left is treated with the antigen-specific peptide.